

## CONTRACT | SPECIALTY

# Recessed Shading Systems

## AP SERIES CEILING POCKETS



Rollease Acmeda Contract's AP Series of recessed pockets have been designed to meet any commercial installation needs, allowing shades to seamlessly disappear into any ceiling when not in use. Whether installing a manual or motorized Rollease Acmeda Contract Series One or Series Two system, or other manufactured system, our family of pockets is the smart choice for flexibility and adaptability. With optional removable bottom closures available, these pockets are brilliant in both simplicity and style.

### Features

- Available with and without a ceiling tile support flange for drop-ceiling applications
- Removable bottom closures available for single and dual shade systems make installation and maintenance easy
- Aluminum composition retains structural integrity while allowing for on-site cutting
- Extrusions are 10' in lengths to allow for easier transportation and navigating on job sites
- Endplates are rotationally symmetrical for ease of installation
- Reduced lead times due to domestically stocked inventory

### Colors



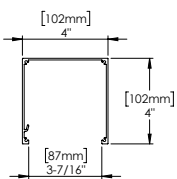
White



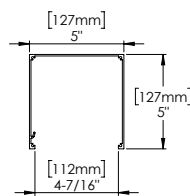
Anodized  
(4" and 5" only)

### Cross-section View

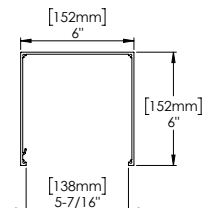
4" Pocket  
AP-44



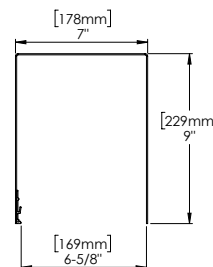
5" Pocket  
AP-55



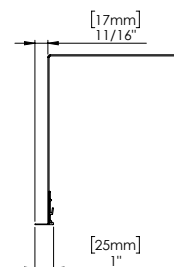
6" Pocket  
AP-66



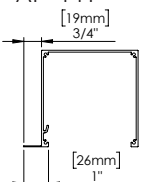
7"x 9" Pocket  
AP-79



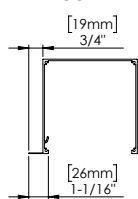
7"x 9" Pocket  
with Tile Lip  
AP-79T



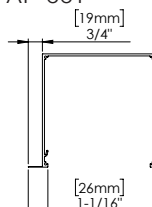
4" Pocket  
with Tile Lip  
AP-44T



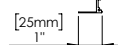
5" Pocket  
with Tile Lip  
AP-55T



6" Pocket  
with Tile Lip  
AP-66T



L Clip



I Clip

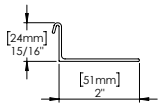


**ROLLEASE ACMEDA**  
**CONTRACT**

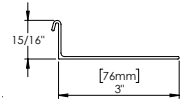


# Bottom Closures

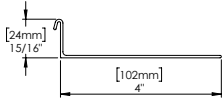
2" RETURN: RCCP-8006-075305



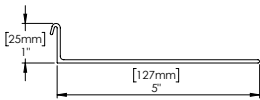
3" RETURN: RCCP-8003-075305



4" RETURN: RCCP-8004-075305

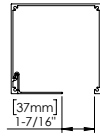


5" RETURN: RCCP-8005-xxx305



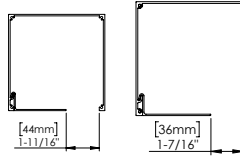
4"x 4" Pocket

2" RETURN



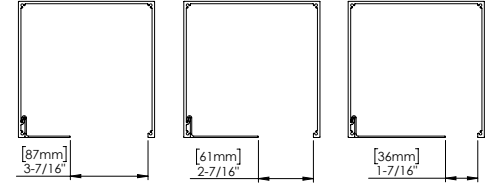
5"x 5" Pocket

2" RETURN 3" RETURN



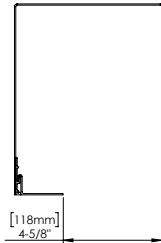
6"x 6" Pocket

2" RETURN 3" RETURN 4" RETURN

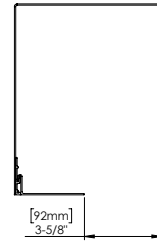


7"x 9" Pocket

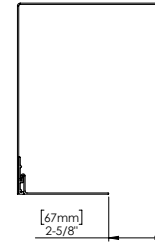
2" RETURN



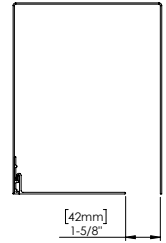
3" RETURN



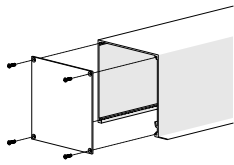
4" RETURN



5" RETURN

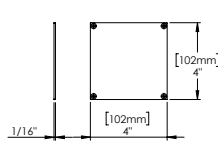


# Endplates

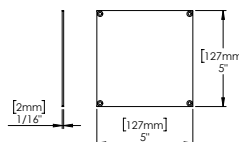


Thickness = 1/16" (2mm)  
Endplates sold separately

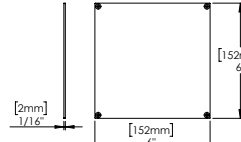
4": RCCP-4100-xxx000



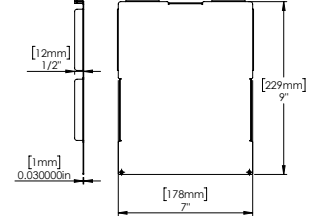
5": RCCP-5100-xxx000



6": RCCP-6100-075000



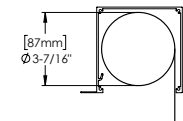
7": RCCP-7100-075000



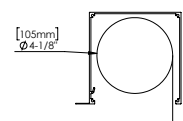
# Maximum Roll Diameter

## Single Shades

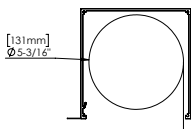
4"x 4" Pocket



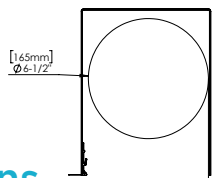
5"x 5" Pocket



6"x 6" Pocket

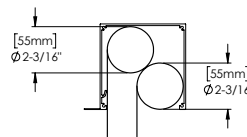


7"x 9" Pocket

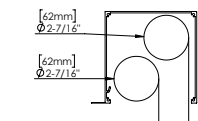


## Dual Shades

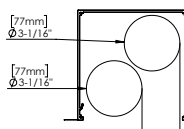
4"x 4" Pocket



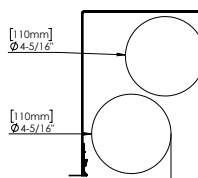
5"x 5" Pocket



6"x 6" Pocket



7"x 9" Pocket



# Additional Options

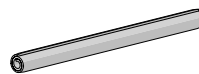
Edge Side Channels  
For improved light blockout



Internal Wire Guide  
Supporting complex shading systems



Alignment Pins  
Supporting complex shading systems\*



- \*Compatible with:
- RCCP-400x-xxx305
  - RCCP-500x-xxx305
  - RCCP-600x-075305
  - RCCP3x
  - RCCP4x

**ROLLESEACMEDA**  
**CONTRACT**

