

**S45 Automate | 28mm**

The motorized S45 roller shade system offers two Automate motors for three tube diameters to suit a variety of applications. Featuring ARC (Automate Radio Communication), the 28mm S45 Automate system provides an intelligent, Li-ion battery, or a DC powered solution.

**AESTHETIC FEATURES**

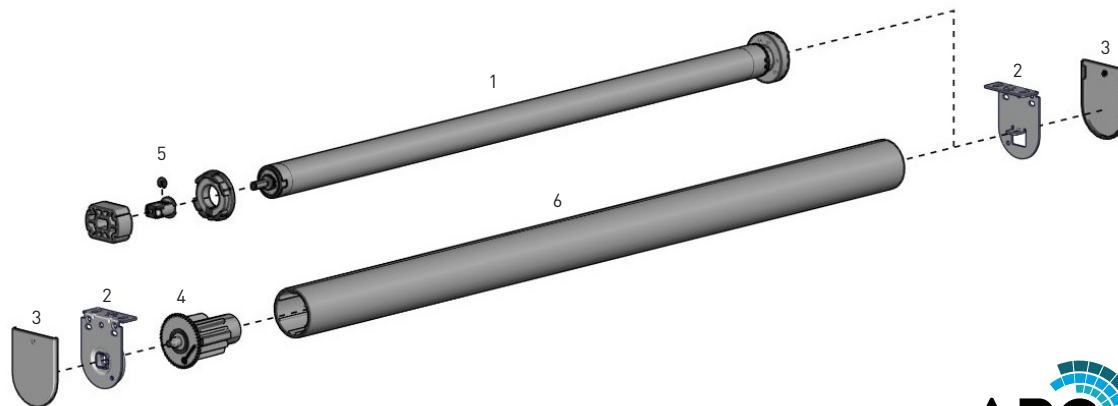
- Slim and compact roller blind system
- Contemporary design

**ASSEMBLY / PRODUCTION FEATURES**

- Easy-Lock effortless installation
- Easy limit setting and programming.

**FUNCTIONAL BENEFITS**

- Leveling control
- Simple limit setting and adjustment
- Favorite position
- 3 operational speed settings
- 2-way RF communication
- ARC protocol for simple programming

**SYSTEM INDEX**

- Automate Motor | 28mm  
a. MTDCBRFQ28-2 - Li-ion Q2.0  
b. MTDCRFQ28-2 - DCRF Q2.0
- Brackets  
RB09-0352-xxx040
- Bracket Covers  
RB08-4151-xxx040
- Pin End  
RB08-0503-xxx045  
RB09-0245-xxx001
- Crown and Drive Kit  
MTCRDR-28-S45
- Aluminium Tube  
RB93-044#-000490  
RB93-644#-000490

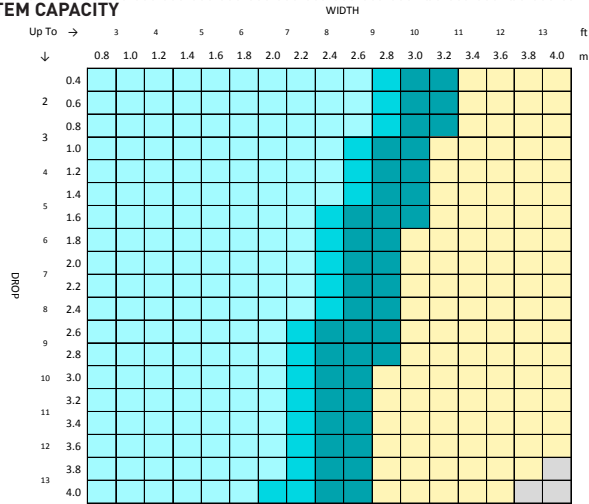
**PRODUCT OPTIONS****SUN SENSOR****SYSTEM UPGRADES**

- CF90 CASSETTE
- CF90 EDGE
- LINK SYSTEM

**CONTROL OPTIONS****PARADIGM REMOTES****WALL SWITCH****SMART HOME****PULSE****CHARGERS****ELECTRIC****SOLAR**

SPECIFICATIONS

28mm SYSTEM CAPACITY

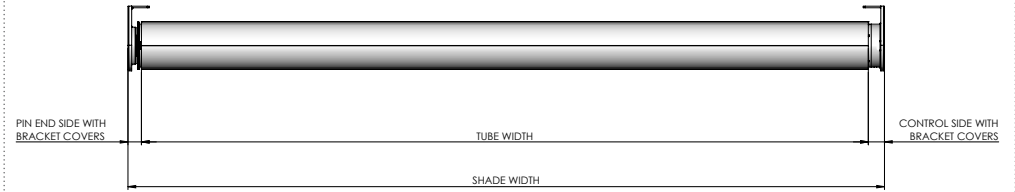


Fabric Thickness: 0.024" [0.60mm]  
 Fabric Density: 12.39oz/yd<sup>2</sup> [420gsm]  
 Weight Bars: D30 Silent Medium Aluminum Bottom Rail

Li-ion Q2.0 MIN. WIDTH 2.60' (0.8m)  
 DCRF Q2.0 MIN. WIDTH 2.00' (0.6m)

CONTROL	TUBE	LINK SYSTEM
28mm Motor	S45 - LIGHT	
	S45 - STANDARD	
	S45 - HEAVY DUTY	
OUTSIDE SPECIFICATIONS		

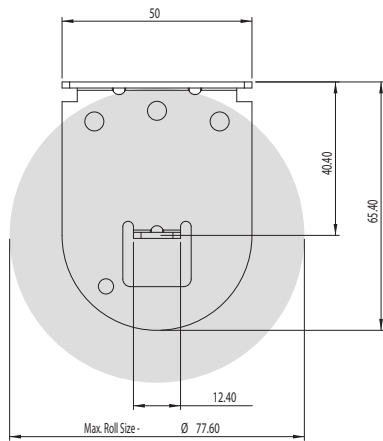
DEDUCTION CHART



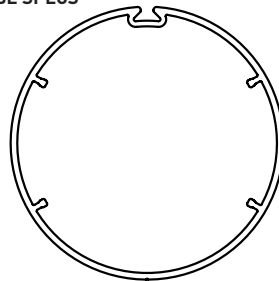
MOTOR		PIN END	CONTROL SIDE	OVERALL DEDUCTION
MTDCBRFQ28-2/ MTDCRF28-2	With Bracket Covers	.55" [14mm]	.60" [15mm]	1.14" [29mm]
	No Bracket Covers	.51" [13mm]	.55" [14mm]	1.06" [27mm]

MAX ROLL

BRACKET	MAX ROLL SIZE
RB09-0352-xxx040	3.1" [77.6mm]

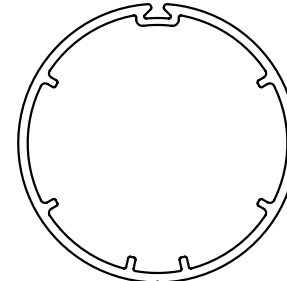


TUBE SPECS



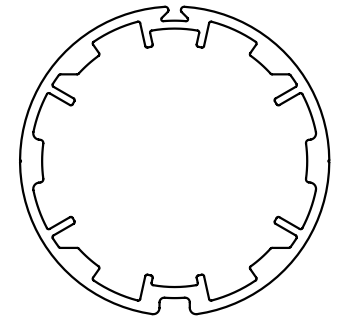
S45 LIGHT T-SPLINE TUBE

Code: RB93-0443-000490  
 RB93-6443-000490 (with tape)  
 OD: 1.69" [43mm]  
 Length 16' [4.9m]



S45 STANDARD T-SPLINE TUBE

Code: RB93-0444-000490  
 RB93-6444-000490 (with tape)  
 OD: 1.73" [44mm]  
 Length 16' [4.9m]



S45 HEAVY DUTY T-SPLINE TUBE

Code: RB93-0449-000490  
 RB93-6449-000490 (with tape)  
 OD: 1.93" [49mm]  
 Length 16' [4.9m]

MAX DROP		
S45 LIGHT	S45 STANDARD	S45 HEAVY DUTY
13.12' [4.00m]*		

\* Recommended Max Drop. Exceeding this value may cause fabric tracking issues