

R-Series 2.0Nm | 28mm

The motorized 28mm 2.0Nm R-Series roller shade system offers multiple tubes to suit a variety of applications. Featuring ARC (Automate Radio Communication), the 28mm 2.0Nm R-Series system provides an intelligent Li-ion battery powered solution.

AESTHETICAL FEATURES

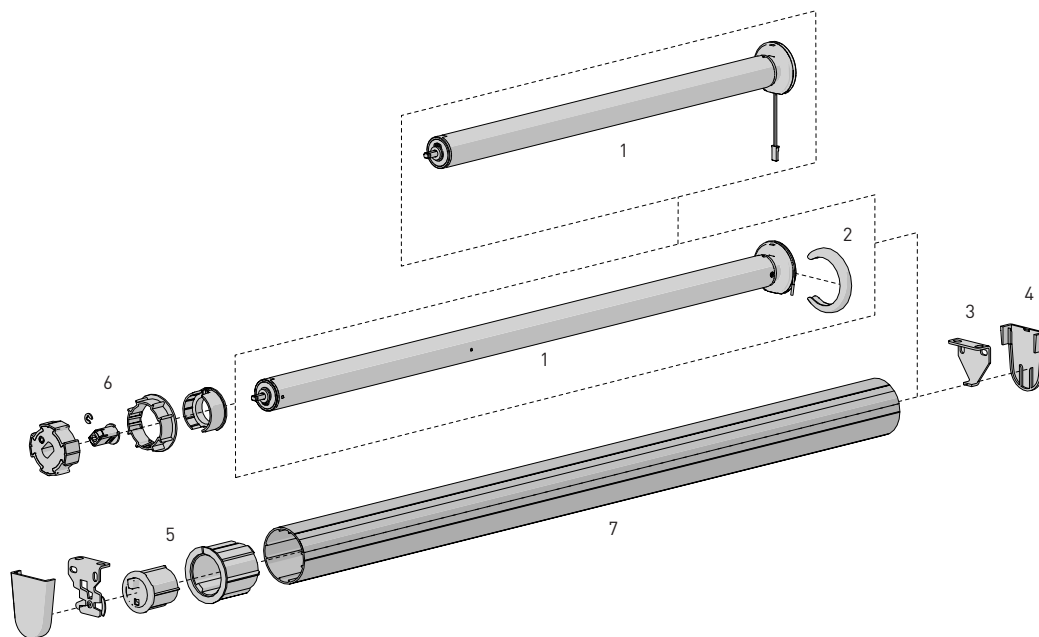
- Thinner Motor Head
- Motor cap to color match with brackets

PRODUCTION & ASSEMBLY FEATURES

- Smaller Motor end deduction
- Crown, drive and adapters available to suit variety of tube sizes

FUNCTIONAL BENEFITS

- 5V Micro USB Charging
- Antennae Wire Retention Feature
- Levelling control
- Simple limit setting and adjustment
- Favorite position
- 3 operational speed settings
- ARC protocol for simple programmin
- 2-WAY RF communication

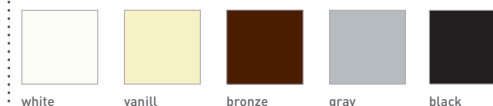


SYSTEM INDEX

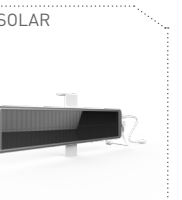
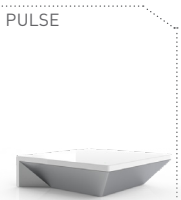
1	Automate Motor 28mm MT01-1228-069002 - DCRF 2.0Nm 40rpm 12V ZERO MT01-1328-069010-CT - Li-ion 2.0Nm 28rpm 5V ZERO CT15
2	Motor Cap MT03-0502-027001 - Chrome MT03-0502-034001 - Satin Nickel MT03-0502-043001 - Brass MT03-0502-059001 - Black MT03-0502-077001 - White MT03-0502-079001 - Antique Bronze MT03-0502-091001 - Gun Metal
3	Brackets RB360xx - R8 1½" Set RB380xx - R8 2" Set RB390xx - R8 2-7/8" Set
4	Bracket Covers RBPC360xx RBPC380xx
5	Pin End + Adapter REP53xx - 1½" tube REP53xx + RA2xx - 2" tube with Adapter
6	Crown and Drive Kit MT03-0110-069002 - 1½" tube MTCRDR-28-2 - 2" tube
7	Aluminum Tube RTEA4T## - 1½" tube RTEA5T## - 2" tube

- Size
xxx= Color

COLOR RANGE



CONTROL OPTIONS



CHARGERS

OPTIONS

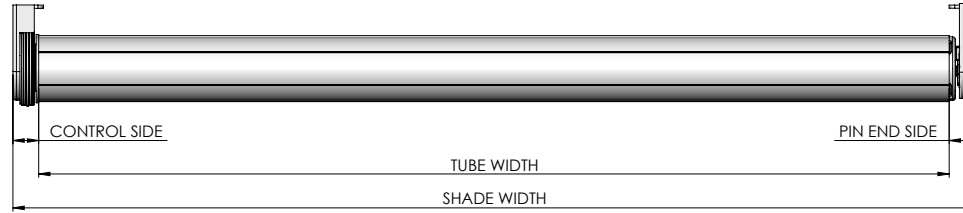


SYSTEM UPGRADES

- CASSETTE 80/100/120
- FASCIA 3"/4"/5"
- LINK SYSTEM
- POCKETS 3"/4"/5"/6"

SPECIFICATIONS

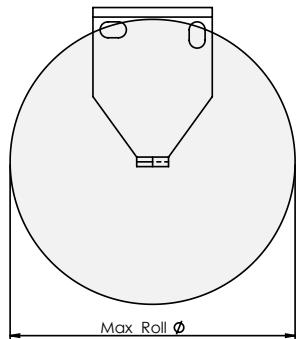
DEDUCTION CHART



MINIMUM SHADE WIDTH		
MOTOR	TUBE	MINIMUM LENGTH
MT01-1228-069002	1.5"	20-1/4" [515mm]
	2.0"	20-1/16" [509mm]
MT01-1328-069010-CT	1.5"	28-11/16" [756mm]
	2.0"	29-3/4" [756mm]

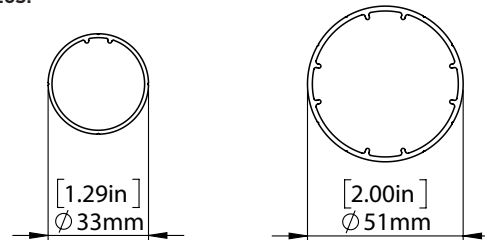
TUBE	MOTOR	BRACKETS	LIGHT GAP		
			CONTROL END	PIN END	OVERALL
1 1/2"	ALL	With Covers	5/8" [16mm]	11/16" [17mm]	1-5/16" [33mm]
		No Covers	1/2" [13mm]	9/16" [15mm]	1-1/8" [28mm]
2"	ALL	With Covers	5/8" [16mm]	11/16" [17mm]	1-5/16" [33mm]
		No Covers	9/16" [14mm]	9/16" [15mm]	1-1/8" [29mm]

MAX ROLL



BRACKET	MAX ROLL SIZE
RB360xx	2.57" [69mm]
RB380xx	3.65" [92mm]
RB390xx	4.00" [101mm]

TUBE SPECS.



1 1/2" Tube

Code: RTEA4T12 (with tape)
RTEA4U12
RTEA4T16 (with tape)
RTEA4U16

Length 12', 16'
(3.66m, 4.88m)

2" Tube

Code: RTEA5T12 (with tape)
RTEA5U12
RTEA5T16 (with tape)
RTEA5U16

Length 12', 16'
(3.66m, 4.88m)

MOTOR	MAX LIFTING CAPACITY		MAX DROP*
	1-1/2" TUBE	2" TUBE	
2.0Nm	23.3lbs [10.6kg]	17.6lbs [8.0kg]	13.1' [4m]

* Recommended Max Drop. Exceeding this value may cause fabric tracking issues.

SYSTEM CAPACITY

