




NEW PRODUCT | OPULENCE SERIES BRACKETS

PRODUCT DETAILS			
DESCRIPTION.	SL Opulence Bkt w Cover 45mm Proj	RB09 Opulence Bkt Set w Covers 45mm Proj	Deluxe Bracket Motor Cover
CODE.	SL01-9013-xxx045 (Round) SL01-9023-xxx045 (Square)	RB09-0370-xxx045 (Round) RB09-0371-xxx045 (Square)	SL01-8001-xxx045
SO MULTIPLE.	20 EA	10 EA	20 EA
PRICE.	Refer to catalog	Refer to catalog	Refer to catalog
COLOUR / FINISH.	White (069), Black (050), Satin Nickel (034), Antique Bronze (079) – Only white and black for RB09		
IMAGE.			
USE WITH.	All Skyline manual, spring, and motor components	All RB09/S45 manual, spring, and motor components	Opulence Brackets; both Skyline and RB09
AVAILABLE.	January 8, 2025		

FEATURES & BENEFITS

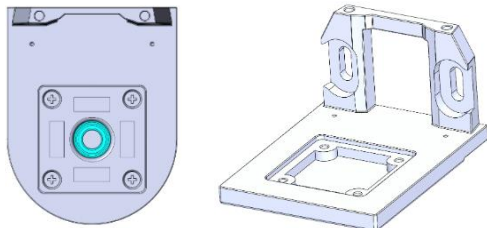
PRODUCTION / INSTALLATION FEATURES

- Uses common #8 hex head screws for installation.
- Screw cover is magnetized. Simply slide the cover on to install.
- Additional screw cover available for routing DC motor wire through bracket.
- 45mm bracket projection allows for 3" roll diameter for optimal maximum shade heights.



FUNCTIONAL BENEFITS

- Bearing installed in Skyline version for noise reduction.
- Easy to install with adjustable screw location.



AESTHETIC FEATURES

- Covers hide the screws post-installation for a clean look.
- Upscale, finished look for open roll shades in popular color options of white, black, satin nickel and antique bronze.