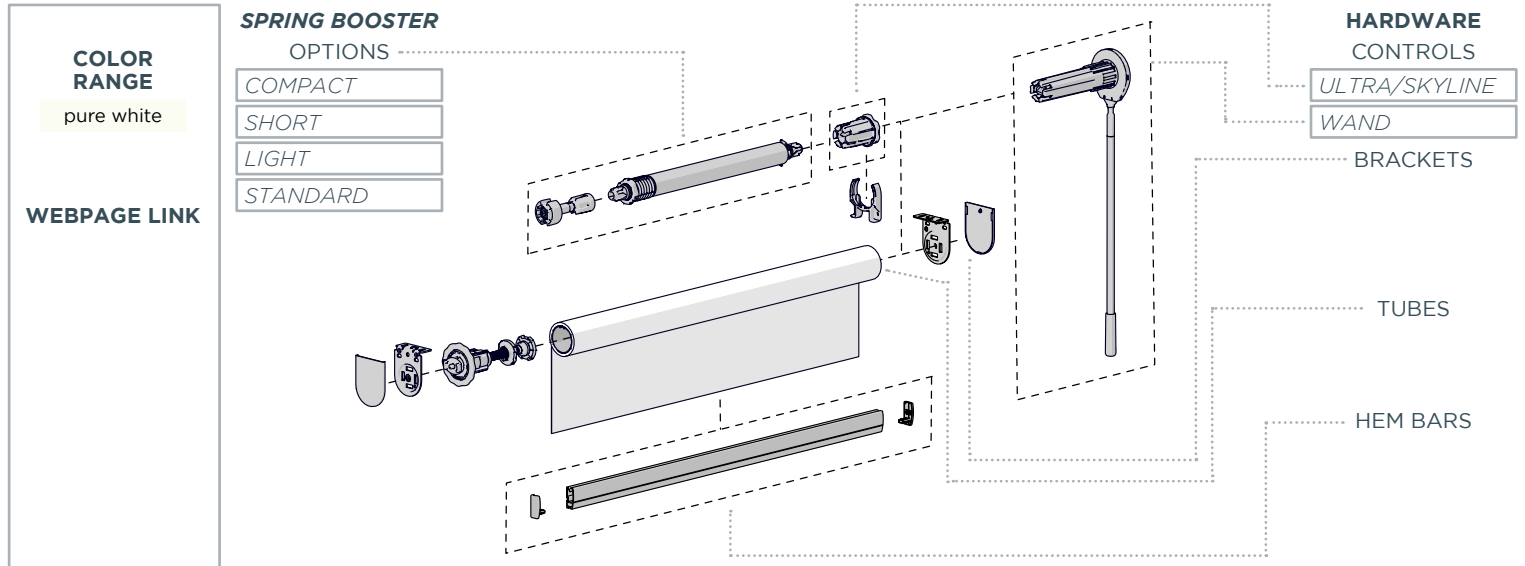
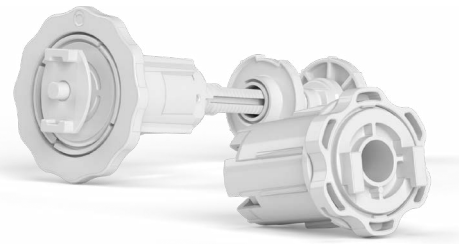


# EASY SPRING

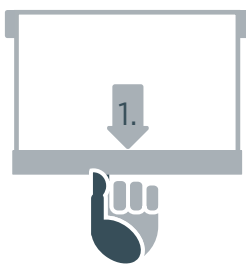
## FEATURES & BENEFITS

- An effortless semi-automatic rise of shade through the tug of the hem bar.
- On-site fine tuning of installed shade's top limit through innovative Limiter design.
- Decelerator provides controlled auto-rise & stop of shade.
- Pre-tension Retaining Clip for secure hold of spring pretension during transportation.
- Additional wand control for hard-to-reach installations in right and left hand orientation.
- A child-safe chain & cord-free system solution.

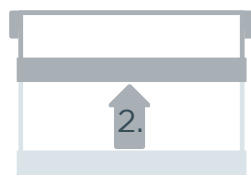


## KEY SYSTEM FEATURES

### SEMI AUTOMATIC RISE

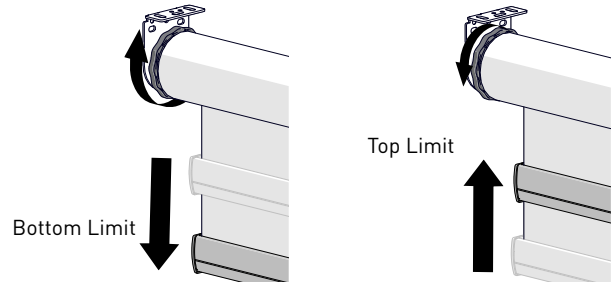


1. Tug Hem bar downwards and release.



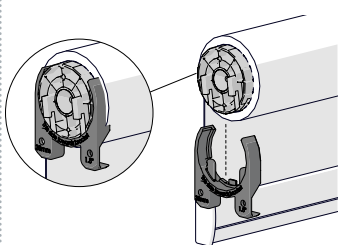
2. Shade will auto-rise to top limit.

### UNIVERSAL SPRING LOADED LIMITER

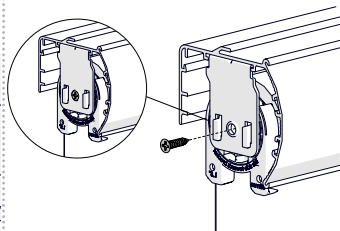


Rotate Limiter head to adjust the top limit position in installation.

### SECURE TENSION DURING TRANSPORTATION



Pre-tension Retaining Clip



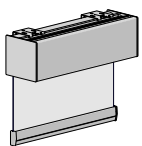
Fastener for Cassette 100/120

### WAND CONTROL OPTION

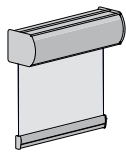


Access hard to reach installations with Easy Spring Wand. (Control shade by wand or hem bar).

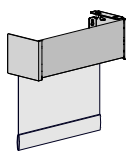
## SYSTEM UPGRADES



SQUARE CASSETTE 110



CASSETTE 100/120



SKYLINE FASCIA

EASY-LINK

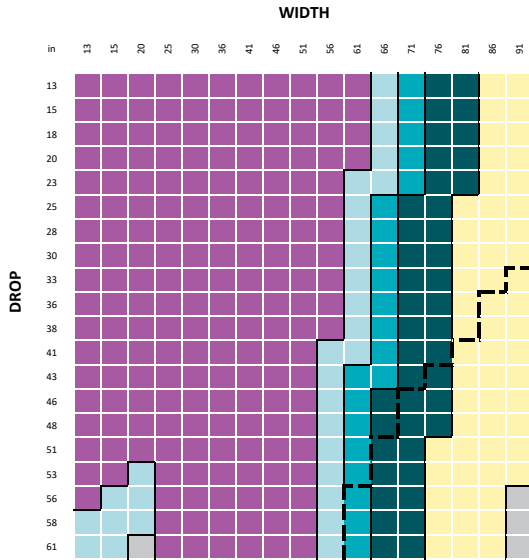
MOUNTING RAIL

P95 PELMET

CF90

# EASY SPRING SPECIFICATIONS

## SYSTEM CAPACITY




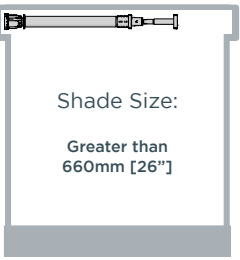
TUBE	PARAMETERS:
1.5"	FABRIC DENSITY: 12.39oz
S45 LT	FABRIC THICKNESS: 0.2"
S45 STD	WEIGHT BAR: D30 Bottom Rail
S45 HD	MIN WIDTH = 18-1/8"
LINKED	SEE PRODUCT SPECIFICATIONS FOR FURTHER INFORMATION
OUTSIDE PRODUCT SPECIFICATION	
OUTSIDE ESW USER EFFORT	

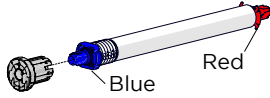


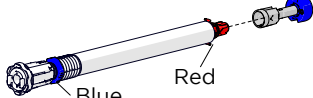


## PRE-TURNS CHECK

Refer to the pre-tension charts to find the number of preturns required Scan the QR Code



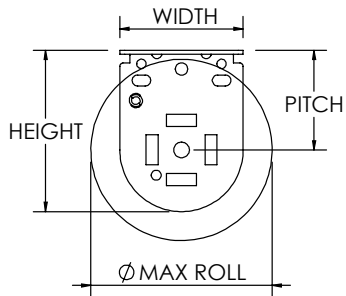
## EASY SPRING BOOSTER OPTIONS

COMPACT BOOSTER	BOOSTERS
 <p>Shade Size: 460mm [18-1/8"] to 660mm [26"]</p>	 <p>Shade Size: Greater than 660mm [26"]</p>
Compact Booster all in one design requires: • Limiter	Booster assembly requires: • Control • Decelerator • Limiter
Left Hand control only.	Left Hand & Right Hand control options.
Not compatible with Easy Spring Wand.	Compatible with Easy Spring Wand.

BOOSTER + CHAINFREE CONTROL ASSEMBLY	
	<p><b>CONFIGURATION CHECK</b></p> <p>LH Control </p> <p>RH Control </p>
BOOSTER + DECELERATOR ASSEMBLY	
	<p><b>CONFIGURATION CHECK</b></p> <p>LH Control </p> <p>RH Control </p>

## TECHNICAL DATA

SINGLE BRACKETS	SPECIFICATIONS			MAX ROLL
	PITCH	WIDTH	HEIGHT	
SKYLINE 1.5"	40mm [1-9/16"]	55mm [2-3/16"]	60mm [2-3/8"]	76mm [3"]
LX 40mm	40mm [1-9/16"]	50mm [1-15/16"]	65mm [2-9/16"]	68mm [2-11/16"]



BOOSTER CAPACITY	TUBE			
	1-1/2"	S45 LT	S45 STD	S45 HD
COMPACT	3.84 lbs	3.43 lbs	3.36 lbs	3.03 lbs
SHORT	3.70 lbs	3.30 lbs	3.23 lbs	2.91 lbs
LIGHT	5.24 lbs	4.68 lbs	4.58 lbs	4.13 lbs
STANDARD	10.69 lbs	9.54 lbs	9.35 lbs	7.28 lbs*

\*Limited by system capacity

BOOSTER SIZE	MINIMUM SHADE WIDTH (using short limiter)*		TUBE DEDUCTION** (using LX Brackets)	
	ULTRA	WAND	ULTRA	WAND
COMPACT	466mm [18-3/8"]	N/A	35mm [1-3/8"]	35mm [1-3/8"]
SHORT	585mm [23-1/16"]	682mm [26-7/8"]		
LIGHT	767mm [30-3/16"]	864mm [34"]		
STANDARD	920mm [36-1/4"]	1017mm [40-1/16"]		

\*Add 18mm [11/16"] to Minimum Shade Width for Universal Limiter

\*\*Add +2mm [1/16"] to tube deductions for bracket covers.

TUBE WIDTH = SHADE WIDTH - [TUBE DEDUCTIONS]

Minimum Shade Width based on 5mm gap between hardware in tube.

