



Easy Spring Ultra Skyline

INSTALLATION MANUAL

v2.1 | August 2023 | US



CONTENTS

SECTION A TOOLS AND ADDITIONAL ITEMS REQUIRED	3
TOOLS REQUIRED	3
SECTION B SHADE ITEMS REQUIRED	3
SECTION C INSTALLATION	4
SHADE INSTALLATION	4
PRE-TENSION CHECKS	4
ADD OR REMOVE PRE-TURNS (USING THE PRETENSION TOOL)	5
ADD OR REMOVE PRE-TURNS (USING THE TENSION ADJUST)	5
SET LIMITS	6
SECTION D TROUBLESHOOTING	6

DISCLAIMER

INTRODUCTION

This installation manual for Easy Spring Ultra Skyline has been produced by Rollease Acmeda to supply the necessary information for the safe and correct installation of Easy Spring Ultra Skyline

DISCLAIMER

Rollease Acmeda has used reasonable care in preparing the information included in this document, but makes no representations or warranties as to the completeness or accuracy of the information. Information is supplied upon the condition that the persons receiving the information will make their own determination as to its suitability for their purposes prior to use. Rollease Acmeda assumes no liability whatsoever for any damages incurred by you resulting from errors in or omissions from the information included herein. Rollease Acmeda reserves the right to make changes without further notice to any products to improve reliability, function or design.

COPYRIGHT

COPYRIGHT © ROLLEASE ACMEDA

All rights are reserved. No part of this document may be reproduced or utilised in any means, by any means, electronic or mechanical including photocopying, recordings, or by any information storage or retrieval system, without the express permission from Rollease Acmeda.



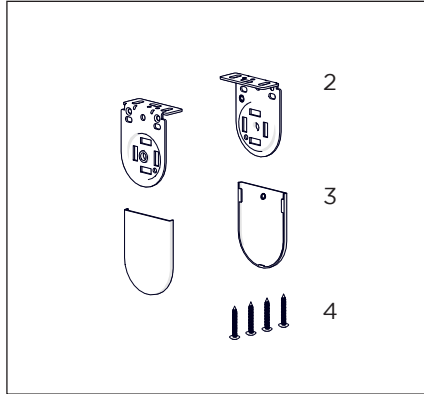
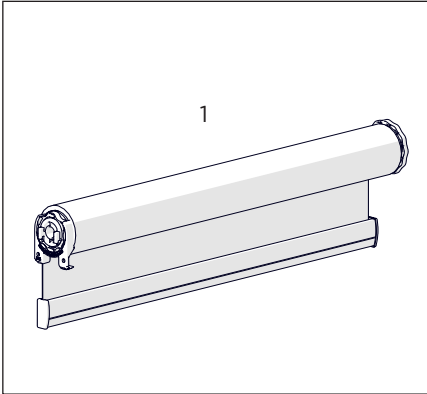
SECTION A | TOOLS AND ADDITIONAL ITEMS REQUIRED

TOOLS REQUIRED

- 1 Screwdriver - Philips Head & Flat Head
- 2 Drill
- 3 Measuring Tape
- 4 Pencil
- 5 Booster Pre-tension Tool (RB12-4530-025000)

SECTION B | SHADE ITEMS REQUIRED

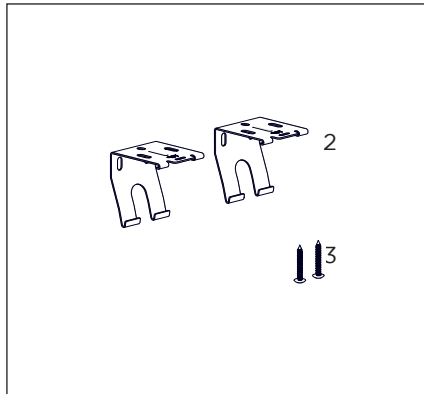
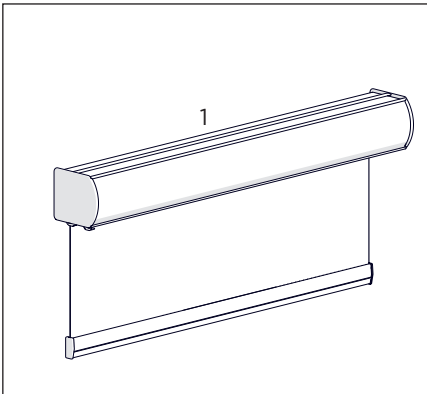
OPEN SYSTEM



SYSTEM INDEX:

1. SHADE ASSEMBLY x1
2. BRACKET SET x1
3. BRACKET COVERS SET x1
 - *Optional*
4. SCREWS x4

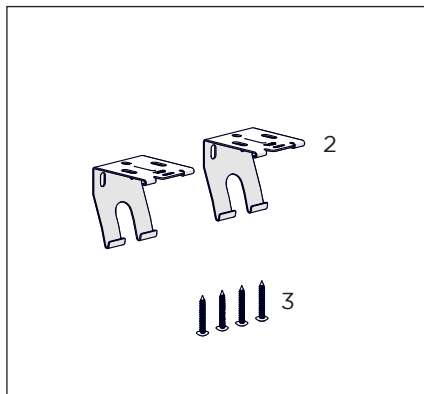
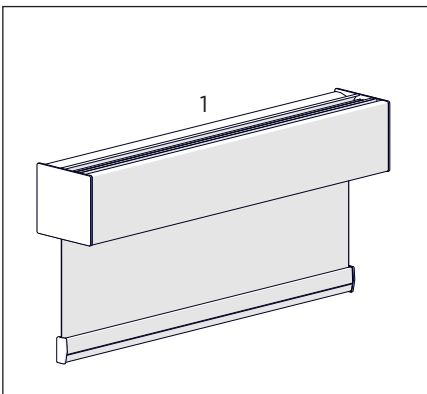
CASSETTE 100



SYSTEM INDEX:

1. SHADE ASSEMBLY x1
2. BRACKET SET (AS REQUIRED)
3. SCREWS (AS REQUIRED)

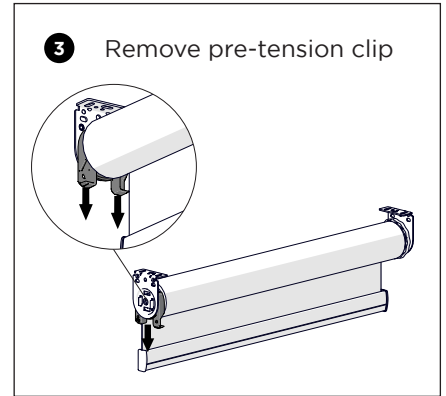
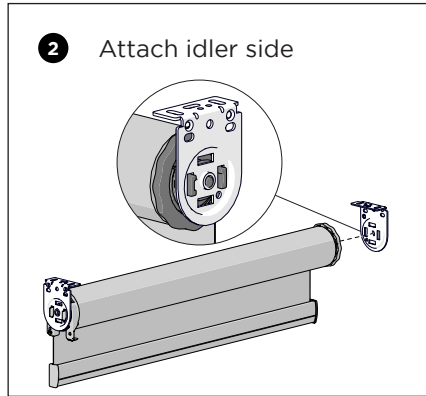
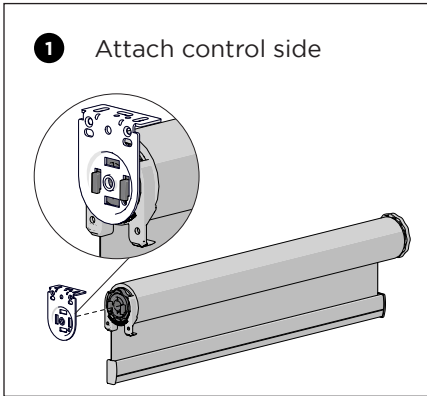
CASSETTE 110



SYSTEM INDEX:

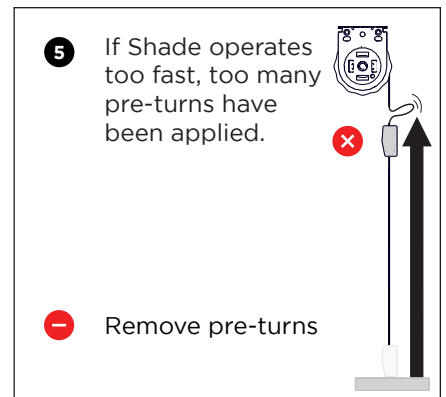
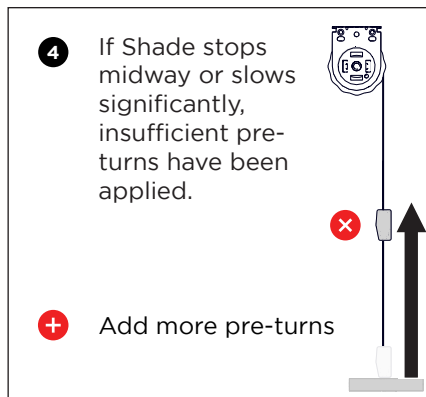
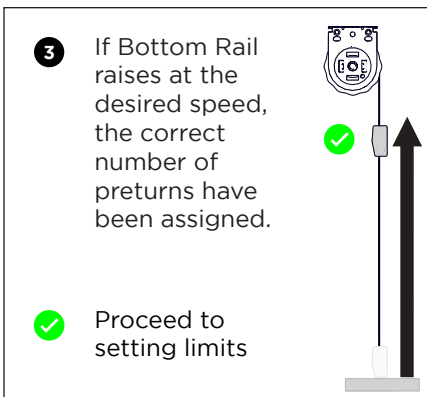
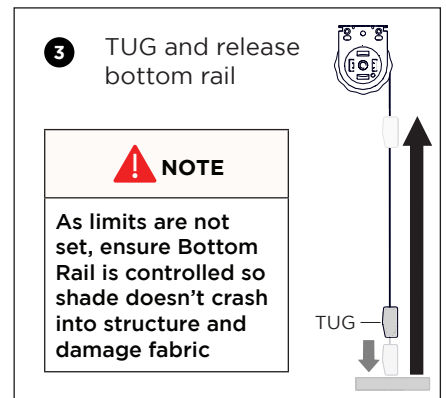
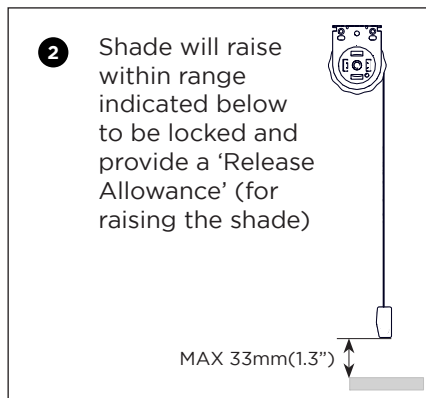
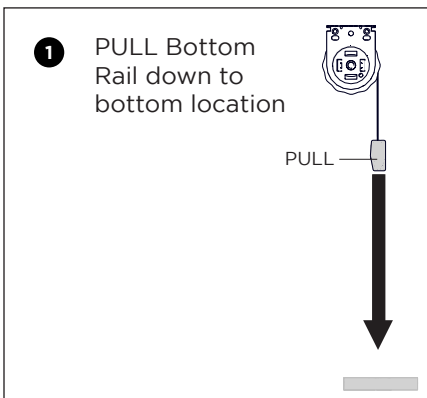
1. SHADE ASSEMBLY x1
2. BRACKET SET (AS REQUIRED)
3. SCREWS (AS REQUIRED)

SHADE INSTALLATION



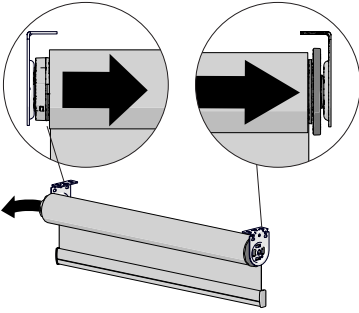
PRE-TENSION CHECKS

CHECK FUNCTIONALITY OF PRE-TENSIONED SHADE



ADD OR REMOVE PRE-TURNS (USING THE PRE-TENSION TOOL)

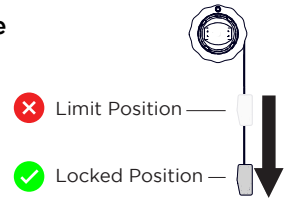
1 Remove Shade



NOTE

Before removing the shade, ensure the shade is lowered slightly in its locked position.

Shade must not be resting on top limit. This is to prevent the spring from losing the pretension when removing the shade from brackets.



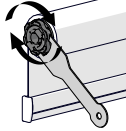
+ ADD PRE-TURNS (USING PRE-TENSION TOOL)

2A Add pre turns using the pre-tension tool

DIRECTION OF PRE-TURNS CHECK

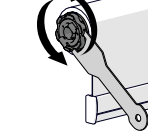
LH Back Roll

Clockwise



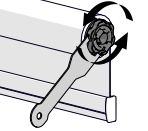
LH Front Roll

Anti-Clockwise



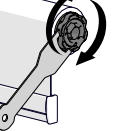
RH Back Roll

Anti-Clockwise

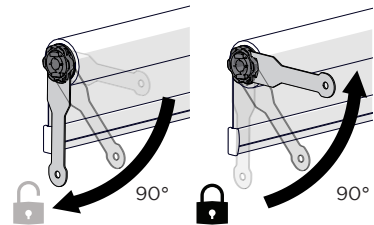


RH Front Roll

Clockwise

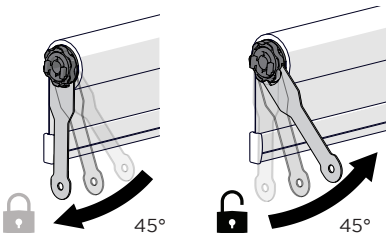


3 Rotate 90° in the direction of pre-turns then release to lock tension



- REMOVE PRE-TURNS (USING PRE-TENSION TOOL)

2B Rotate 45° in the direction of pre-turns then release to un-lock tension, keep rotating until desired pre-turns are achieved



NOTE

After the releasing the spring, the spring will un-tension itself (Spring head will spin in the opposite direction of pretensioning)

PRE-TURNS CHECK

Refer to the pre-tension charts to find the number of preturns required

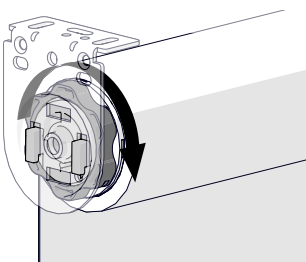
Scan the QR Code



ADD OR REMOVE PRE-TURNS (USING THE TENSION ADJUST)

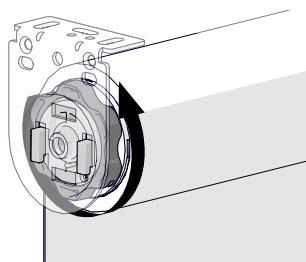
+ ADD PRE-TURNS (USING TENSION ADJUST)

Rotate tension adjust in the direction of preturns



- REMOVE PRE-TURNS (USING TENSION ADJUST)

Rotate tension adjust against the direction of preturns

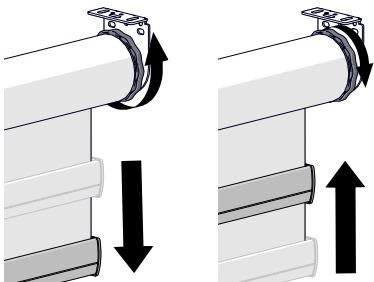


NOTE

Tension adjustments do not replace pre-tension assembly step

SET LIMITS

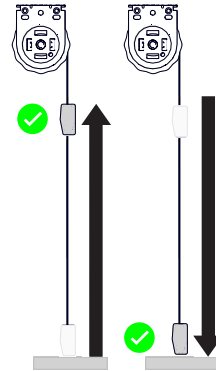
1 Raise or lower the top limit position by rotating the limiter head



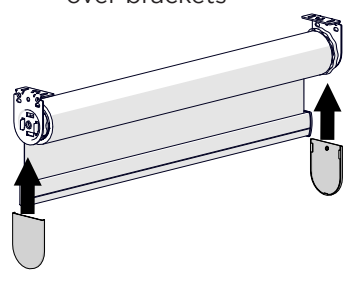
NOTE

- The shade must not be locked by the spring to allow hem bar to move up.
- Standard back roll shown, reverse direction for front roll

2 Test limits by moving the shade up & down



3 Slide End Cap covers over brackets Optional



SECTION D | TROUBLESHOOTING

NO.	PROBLEM	CAUSE	SOLUTION
1	Cannot find limit	Limit incorrectly Set	a) Allow blind to raise fully b) If the bottom rail is too high, contacting the brackets, then: i. Wind limit adjustment wheel in the direction that would lower the shade * ii. When the shade starts to lower this indicates the limit has been engaged c) Use limit adjustment wheel to raise or lower limit as required * Note : If limit wheel appears to require numerous turns, raise the shade to approximate top limit position, un-install the shade from mounting brackets, remove the limiter from the tube, rotate and move limit nut to appropriate stop position. Reassemble and re-install shade to adjust top limit.
2	Erratic Behaviour Shade falls	Connector on wrong end	Remove and re-install on other end (See Assembly Manual)
		No Pre-Turns	Add pretension
3	Shade will raise quickly	Wrong Decelerator	Remove and re-install correct Decelerator (See Assembly Manual)
		Too many Pre-Turns	Remove Pre-Turns
4	Shade does not raise	Incorrect hand Booster	Remove control and re-orientate the booster (See Assembly Manual)
		Control is not fully engaged with Booster	Remove control and check with booster (See Assembly Manual)
		No Pre-Turns	Add pretensions