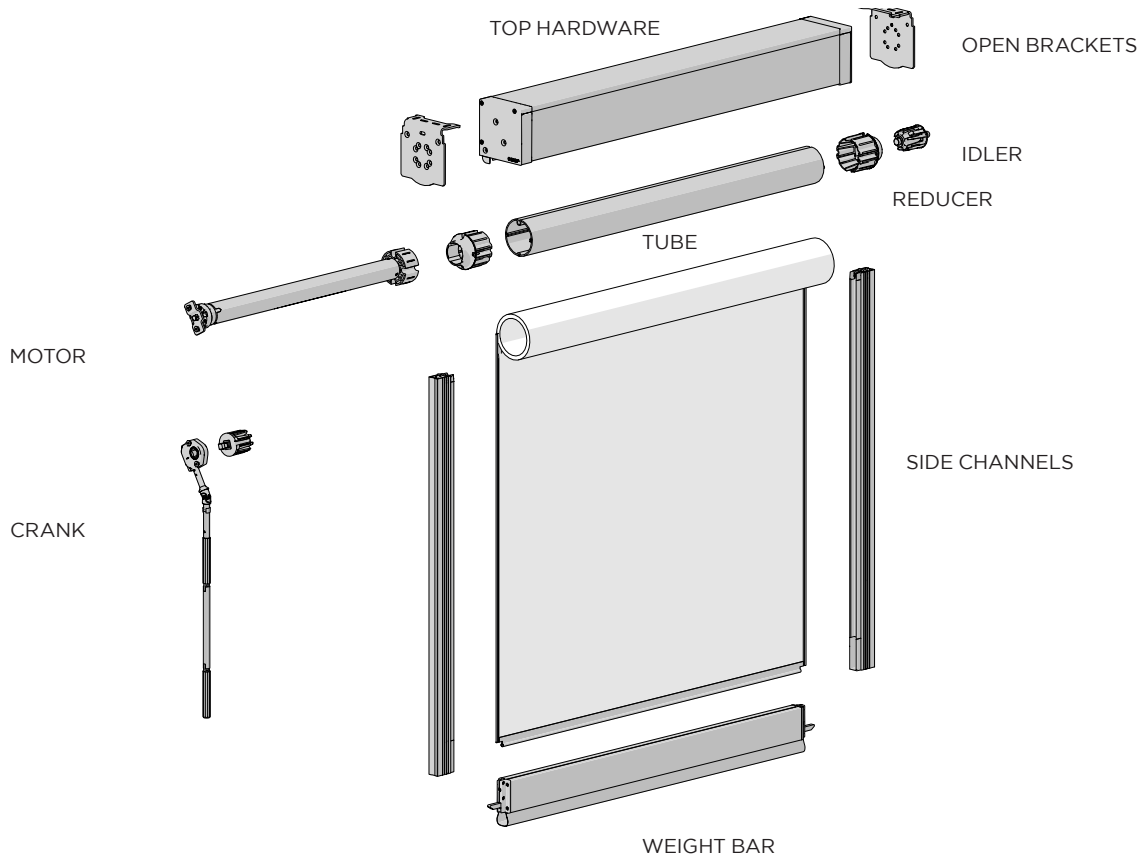


OUTDOOR SHADES

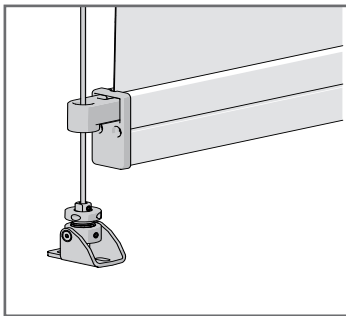
SECTION 1	CORE HARDWARE	
	Box Cassettes	97
	Open Brackets	99
	Controls	100
	Tubes	103
	Weight Bars	105
SECTION 2	SIDE GUIDE OPTIONS	
	Zipscreen	107
	Pivot Arm	108
	Wire Guide	108



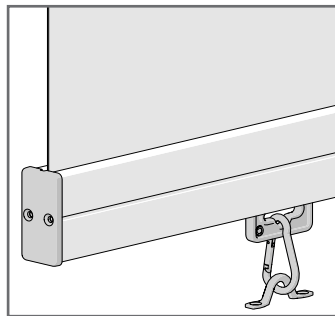
COLOR RANGE



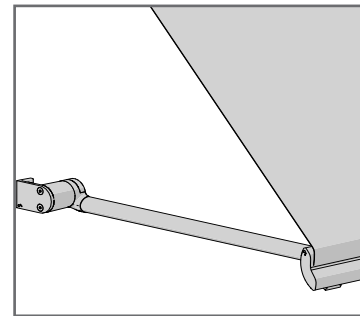
SYSTEM OPTIONS



WIRE GUIDE



STRAIGHT DROP



PIVOT ARM

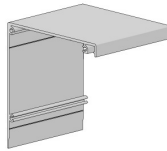
System	Top Hardware				Tubes				Controls		W.Bars		
	Box 120	Box 160	Box 190	Open	78mm	110mm	130mm	160mm	Crank	Motor	F56	F72	Pivot
Zipscreen	✓	✓	✓	✓	✓	✓	✓		✓	✓	✓	✓	
Wire Guide	✓	✓	✓	✓	✓	✓	✓	✓	✓	✓	✓	✓	
Straight Drop	✓	✓	✓	✓	✓	✓	✓		✓	✓	✓	✓	
Pivot Arm	✓			✓	✓				✓	✓			✓

CASSETTE BOX 120

BOX 120 BACK

19ft (5.8m) piece

TYPE	Mill (000)	Colors - refer below
PRICE		
CODE	RE01-0101-000580	RE01-0101-xxx580
PACK	1	1



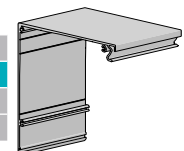
COLOR. Refer to color range on system overview page
 USE WITH. Box 120 Covers & Box 120 End Plate Set

CASSETTE BOX 160

BOX 160 - TOP/BACK COVER | 7M

22.9ft (7m) ****COMING SOON****

TYPE	Mill (000)	Colors - refer below
PRICE		
CODE	RE01-0111-000700	RE01-0111-xxx700
PACK	2	2

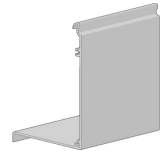


COLOR. Txd Black (150), Txd White (169), Txd Bronze (180)
 USE WITH. Box 160 Front Cover, Box 160 End Plate Set

BOX 120 FULL COVER

19ft (5.8m) Piece

TYPE	Mill (000)	Colors - refer below
PRICE		
CODE	RE01-0102-000580	RE01-0102-xxx580
PACK	2	2

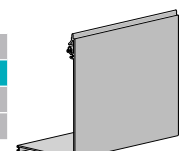


COLOR. Refer to color range on system overview page
 USE WITH. Box 120 Back, Box 120 End Plate Set

BOX 160 - FRONT COVER W/ BUBBLE | 7M

22.9ft (7m) ****COMING SOON****

TYPE	Mill (000)	Colors - refer below
PRICE		
CODE	RE01-0113-000700	RE01-0113-xxx700
PACK	2	2



COLOR. Txd Black (150), Txd White (169), Txd Bronze (180)
 USE WITH. Box 160 Top/Back Cover, Box 160 End Plate Set

BOX 120 FASCIA COVER

19ft (5.8m) piece

TYPE	Mill (000)	Colors - refer below
PRICE		
CODE	RE01-0103-000580	RE01-0103-xxx580
PACK	4	4

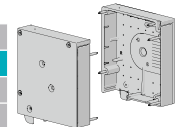


COLOR. Refer to color range on system overview page
 USE WITH. Box 120 Back, Box 120 End Plate Set

BOX 160 - END PLATE SET

LH & RH ****COMING SOON****

TYPE	Mill (000)	Colors - refer below
PRICE		
CODE	RE01-1106-000160	RE01-1106-xxx160
PACK	2	2

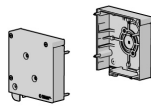


COLOR. Txd Black (150), Txd White (169), Txd Bronze (180)
 USE WITH. Box 160 Top/Back Cover, Box 160 Front Cover

BOX 120 END PLATE SET

LH & RH

TYPE	Mill (000)	Colors - refer below
PRICE		
CODE	RE01-1101-000120	RE01-1101-xxx120
PACK	2	2

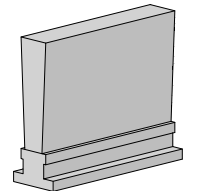


COLOR. Refer to color range on system overview page
 USE WITH. Box 120 Back, Box 120 Full Cover, Box 120 Fascia

FABRIC BRUSH T-SLOT

13mm x 4.8mm | 400m Roll ****COMING SOON****

PRICE	
CODE	SB91-0022-050400
PACK	400

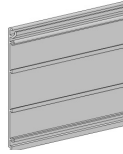


COLOR. Black (050)
 USE WITH. Box 160 Top/Back Cover, Box 160 Front Cover

BOX 190 UNIVERSAL EXTRUSION

22.9ft (7m)

TYPE	Mill (000)	Colors - refer below
PRICE		
CODE	RE01-0106-000700	RE01-0106-xxx700
PACK	1	1

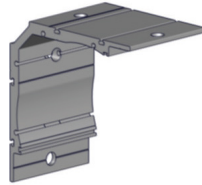


COLOR. Mill (000), Black (050), White (069)

USE WITH. Box 190 Front Cover, Box 190 Two-Side End Plate Set

BOX 190 - UNIV. BRACKET EXTRUSION X4" (100MM) ANOD

PRICE	
CODE	RE01-1105-020100
PACK	2



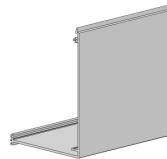
COLOR. Anodized (020)

USE WITH. Box 190 Universal Extrusion

BOX 190 - FRONT COVER

22.9ft (7m)

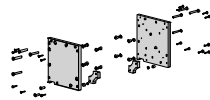
TYPE	Mill (000)	Colors - refer below
PRICE		
CODE	RE01-0107-000700	RE01-0107-xxx700
PACK	1	1



COLOR. Mill (000), Black (050), White (069)

USE WITH. Box 190 Universal Extrusion, Box 190 Two-Side End Plate Set

BOX 190 TWO-SIDE END PLATE SET



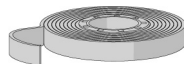
TYPE	Mill (000)	Colors - refer below
PRICE		
CODE	RE01-1105-000000	RE01-1105-xxx001
PACK	1	1

COLOR. Mill (000), Black (050), White (069)

USE WITH. Box 190 Universal Extrusion & Bracket, Extreme Bracket adapters, Wire Guide adapter plate

FOAM TAPE

TYPE	0.063" x 0.354"
PRICE	
CODE	SB91-0516-050009
PACK	45



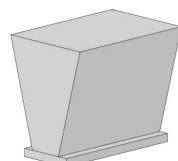
COLOR. Black (050)

USE WITH. Box 190 Universal Extrusion, Box 190 Front Cover

FABRIC BRUSH T SLOT FIT

10m x 4.8mm | 200m Roll

PRICE	
CODE	SB91-0012-050300
PACK	200



COLOR. Black (050)

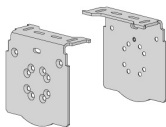
USE WITH. Box 190 Front Cover, Universal Bracket Extrusion

OPEN BRACKETS

EXT

OPEN BRACKETS | SQUARE | 78MM

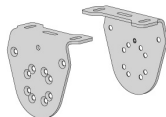
TYPE	Stainless Steel (012)	Colors - refer below
PRICE		
CODE	RE01-3031-012000	RE01-3030-xxx000
PACK	2	2



COLOR. Refer to color range on system overview page - Silver Zinc Plated (025) also available

OPEN BRACKETS | ROUND | 78MM

TYPE	Stainless Steel	Color - refer below
PRICE		
CODE	RE01-3021-012000	RE01-3020-xxx000
PACK	2	2

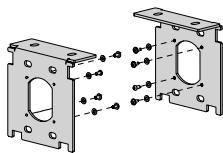


COLOR. Refer to color range on system overview page - Silver Zinc Plated (025) also available

ZIPSCREEN EXTREME | BRACKET KIT

Universal + Screws

TYPE	Polished SS
PRICE	
CODE	SB03-1301-009190
PACK	1

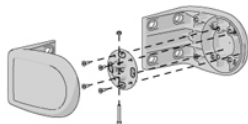


COLOR. Polished Stainless Steel (009)
USE WITH. Extreme Square Bracket Plates

EXTREME OUTSIDE/WALL MOUNT BRACKET SET | S100

& adapter

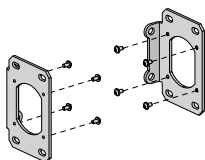
PRICE	
CODE	RB80-1201-xxx109
PACK	1



COLOR. Pure White (069), Black (050)
USE WITH. Zamak Adapter, Extreme Bearing Idler

INSIDE MOUNT BRACKET KIT | MOTOR | S100

PRICE	
CODE	RB80-0478-069100
PACK	1



COLOR. Pure White (069)
USE WITH. Extreme Bracket Adapter Kit

CRANK OPERATION GEAR - RATIO 5:1

with fixing screws

TYPE	Mill (000)	Color
PRICE		
CODE	RE01-0513-000003	RE01-0513-050003
PACK	5	5



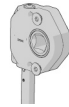
COLOR. Black (050)

USE WITH. Crank Housing, Box 120 End Plate Set, Open Blind Brackets

CRANK OPERATION GEAR- RATIO 8:1

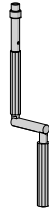
with fixing screws

TYPE	Mill	Color
PRICE		
CODE	RE01-0517-000003	RE01-0517-050003
PACK	5	5



COLOR. Black (050)

USE WITH. Crank Housing, Box 120 End Plates, Open Blind Brackets

GEAR/CRANK OPERATION CONTROL ARM

SIZE	3.2ft (100cm)	4.9ft (150cm)	6.5ft (200cm)
PRICE			
CODE	RB05-9101-340100	RB05-9101-340150	RB05-9101-340200
PACK	5	5	5

COLOR. Gray (340)

USE WITH. Crank Operation Gear, Gear/Crank Operation Arm Support

GEAR/CRANK OPERATION ARM SUPPORT

PRICE	
CODE	RB05-9102-xxx000
PACK	5

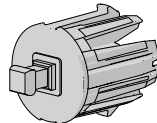


COLOR. Pure White (069), Gray (340)

USE WITH. Gear/Crank Operation Control Arm

CRANK ADAPTOR | 45MM

PRICE	
CODE	RE01-0502-050045
PACK	5

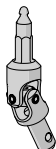


COLOR. Black (050)

USE WITH. Crank Operation Gear, 45mm reducer, 45mm to 78mm Crown

RE01 GEAR | UNIVERSAL JOINT

PRICE	
CODE	RE01-0510-020000
PACK	10



COLOR. Anodized (020)

USE WITH. Crank Operation Gear, Crank Operation Control Arm

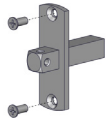
CONTROL

MOTORS

78MM TUBES

AUTOMATE VEUE 45MM SLIM MOTOR 10MM SQ. SHAFT

TYPE	45mm
PRICE	
CODE	RE01-0603-025000
PACK	1



COLOR. Silver Zinc Plated [025]
USE WITH. Automate Bracket Adapter

AUTOMATE | 78MM DRIVE SINGLE PIECE

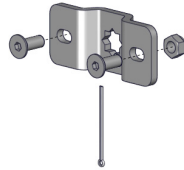
TYPE	78mm
PRICE	
CODE	MT03-0106-050006
PACK	5



COLOR. Black (050)

AUTOMATE VEUE 45MM MOTOR BRACKET ADAPTER + screws

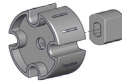
TYPE	45mm
PRICE	
CODE	RE01-0601-025000
PACK	5



COLOR. Silver Zinc Plated [025]
USE WITH. Automate 10mm Sq. Shaft

AUTOMATE | 78MM DRIVE WHEEL | IMPACT DETECT

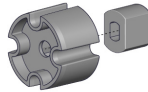
TYPE	78mm
PRICE	
CODE	RE01-0680-050518
PACK	5



COLOR. Black (050)
USE WITH. Automate FT Motor, 78mm Tube

AUTOMATE | 63MM DRIVE WHEEL | IMPACT DETECT

TYPE	63mm
PRICE	
CODE	RE01-0666-050518
PACK	5



COLOR. Black (050)
USE WITH. Automate FT Motor, 63mm Tube

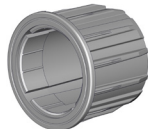
MOTOR DRIVE CLIP FOR 35/45MM MOTORS

TYPE	35/45mm
PRICE	
CODE	MTCLIP-35-45
PACK	100



AUTOMATE | CROWN WHEEL - 63MM UNIVERSAL

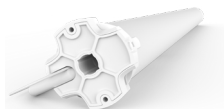
TYPE	63 mm
PRICE	
CODE	RE01-0663-050518
PACK	5



COLOR. Black (050)
USE WITH. Automate FT Motor, 63mm Tube

15NM FT ACRF MOTOR [045/110V/32RPM] 10' CORD PLUG

TYPE	45mm/15Nm/32r Quiet
PRICE	
CODE	MT01-1145-069003
PACK	1



COLOR. Pure White (069)
USE WITH. 78mm tubes, 78mm Automate Drive & Crown Wheel

AUTOMATE REMOTES



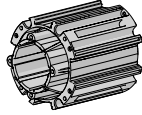
TYPE	Push 15	Push 5	1 Channel
PRICE			
CODE	MT02-0101-067008	MT02-0101-067004	MTRF-REM-1C
PACK	1	1	1

TYPE	15 Channel
PRICE	
CODE	MTRF-REM-15NL
PACK	1

COLOR. White (067)

EXTREME CROWN WHEEL | S100

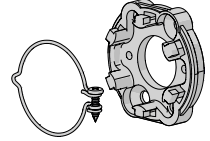
PRICE	
CODE	RB80-0701-073100
PACK	1



COLOR. Gray Cloud (073)
USE WITH. AX Motors, Aluminum Tube S100-100STD & 130HD

UNIVERSAL ZAMAK ADAPTER WITH LOCK RING | THREADED
****COMING SOON****

PRICE	
CODE	RB56-0766-014050
PACK	1



COLOR. Cast Silver (014)
USE WITH. Box 160, AX Motors, 110mm Aluminum tubes

EXTREME DRIVE WHEEL | S100

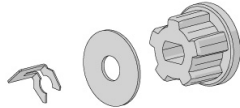
PRICE	
CODE	RB80-0301-073100
PACK	1



COLOR. Gray Cloud (073)
USE WITH. Drive Wheel Adaptor, Aluminum Tube S100-100STD & 130HD

AUTOMATE | AX MOTOR DRIVE ADAPTOR KIT

PRICE	
CODE	MT03-0198-025008
PACK	1



COLOR. Silver Zinc Plated (025)
USE WITH. AX Motor, Extreme Drive Wheel

AUTOMATE | AX30 ARC MOTOR [Ø45/110V/12RPM] LC

PRICE	
CODE	MT01-1145-069018
PACK	1



COLOR. Pure White (069)
USE WITH. Extreme Crown & Drive, Drive Wheel Adaptor

AUTOMATE | AX50 ARC MOTOR [Ø45/110V/13RPM] 20' CORD PLUG

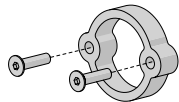
PRICE	
CODE	MT01-1145-069017
PACK	1



COLOR. Pure White (069)
USE WITH. Extreme Crown & Drive, Drive Wheel Adaptor

BOX 160 - MOTOR SPACER W/ SCREWS****COMING SOON****

PRICE	
CODE	RE01-0216-018000
PACK	4

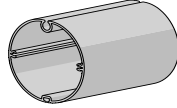


COLOR. Anodized (018)
USE WITH. AX Motors, 110mm Aluminum tubes

TUBES 78MM **EXT**

78MM TUBE W/ SCREW FEATURES

19ft (5.8m) Piece



TYPE	STD-5.8m	HD-5.8m
PRICE		
CODE	RE01-0377-000580	RE01-0380-000580
PACK	2	2

COLOR. Mill (000)
USE WITH. Zipscreen Top Hardware

STEEL TUBE | 78MM

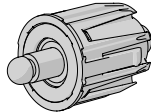
22.9ft (7m) Piece ****WHILE SUPPLIES LAST****



PRICE	
CODE	AW92-0901-000700
PACK	1

COLOR. Mill (000)
USE WITH. Zipscreen Top Hardware

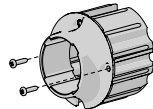
BEARING IDLER | 45MM



PRICE	
CODE	RE01-0213-050045
PACK	510

COLOR. Black (050)
USE WITH. 45mm Reducer, 45mm Crown

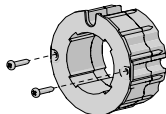
ZIPSCREEN REDUCER 78 | 45MM W/ SCREW



PRICE	
CODE	RE20-0311-050178
PACK	4

COLOR. Black (050)
USE WITH. 78mm tube, 45mm Bearing Idler, 45mm Crank Adaptor, 45mm Motors

AUTOMATE | 78MM CROWN

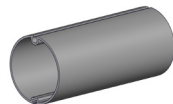


PRICE	
CODE	MT03-0106-050005
PACK	5

COLOR. Black (050)
USE WITH. 78mm tube, 45mm Bearing Idler, 45mm Crank Adaptor, 45mm Motors

ALUMINUM TUBE 63MM

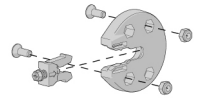
19ft (5.8m) Piece



PRICE	
CODE	RE01-0363-000580
PACK	4

COLOR. Mill (000)
USE WITH. Bearing Idler, Idler Housing, Crank Housing 63mm, Automate Motor

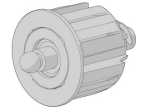
IDLER ADAPTER MKII | RETAINER CLIP + SCREW



PRICE	
CODE	RE01-0214-050000
PACK	5

COLOR. Black (050)
USE WITH. Idler, Standard Idler, Box 120 End Plate, Open Blind Brackets

BEARING IDLER | 63MM

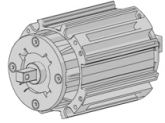


PRICE	
CODE	RE01-0203-050063
PACK	10

COLOR. Black (050)
USE WITH. 63mm Tube, Idler Bracket Adapter

EXTREME BEARING IDLER | S100

PRICE	
CODE	RB80-0202-073100
PACK	1



COLOR. Gray Cloud (073)
 USE WITH. Extreme Bracket Set or Plate, Aluminum Tube S100-100STD & 130HD

ZIP | NO.6 GAUGE

Double Sided - 1 Roll = 656ft (200m)

PRICE	
CODE	SH91-0135-050200
PACK	200



COLOR. Black (050)
 USE WITH. Fabric, Zip Inner Rail

ALUMINUM TUBE | S100 - 110 STANDARD

O.D 4.33" x 22.9ft (110mm x 7m) piece / No Tape

PRICE	
CODE	RB93-0110-000700
PACK	2

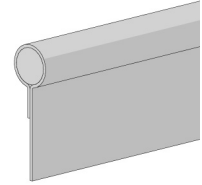


COLOR. Mill (000)
 USE WITH. Extreme Crown & Drive, Reducer Set, Tail Spline

7MM FABRIC SPLINE WITH 15MM TAIL

328ft (100m) roll

PRICE	
CODE	SB91-0409-050015
PACK	1

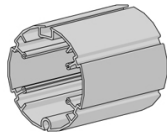


COLOR. Black (050)
 USE WITH. F56 Weight Bar, F72 HD Weight Bar, 78mm tubes

ALUMINUM TUBE | S100 - 130 HEAVY DUTY

O.D 5.12" x 22.9ft (130mm x 7m)

TYPE	22.9ft (7m)
PRICE	
CODE	RB93-0130-000700
PACK	1

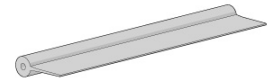


COLOR. Mill (000)
 USE WITH. Extreme Crown & Drive, Reducer Set, Tail Spline

7.2MM SPLINE WITH 15MM TAIL

328ft (100m) roll

PRICE	
CODE	SB91-0408-001015
PACK	1



COLOR. Clear (001)
 USE WITH. F56 Weight bar, 78mm tubes

ZIPSCREEN EXTREME REDUCER SET

2 piece set + screws

PRICE		
CODE	RB80-0501-050110	RB80-0501-050130
PACK	2	2

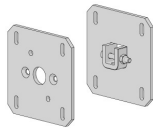


COLOR. Black (050)
 USE WITH. S100 Aluminum tube, S130 Aluminum tube

EXTREME SQUARE MOTOR BRACKET PLATE | S100

4.33" x 0.197" (110mm x 5mm) - Inside Mount

PRICE	
CODE	RB80-1503-xxx110
PACK	1

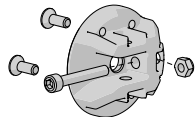


COLOR. Pure White (069), Black (050)
 USE WITH. End Plates, Motor Adaptor

BOX 160 - EXTREME IDLER ADAPTOR

****COMING SOON****

PRICE	
CODE	RE01-0215-050000
PACK	4

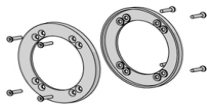


COLOR. Black (050), Pure White (069)
 USE WITH. 110mm Aluminum tubes

EXTREME TUBE END PLATE | S100

2 Piece Set + screws

TYPE	110 Standard	130 Heavy Duty	160 Extra Heavy Duty
PRICE			
CODE	RB80-0601-073110	RB80-0601-073130	RB80-0601-073160
PACK	1	1	1

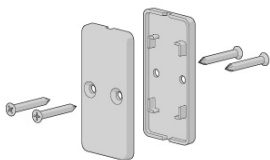


COLOR. Gray Cloud (073)
 USE WITH. S100 Aluminum Tube- 110mm, 130mm & 160mm

WEIGHT BARS

EXT

F56 WEIGHT BAR PLAIN END CAP



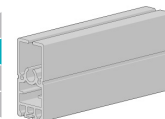
PRICE	
CODE	RE15-0501-050000
PACK	5

COLOR. Black (050)
 USE WITH. F56 Weight Bar

F56 WEIGHT BAR

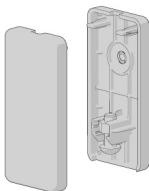
19ft (5.8m) Piece

SIZE	Mill (000)	Colors - refer below
PRICE		
CODE	RE15-0101-000580	RE15-0101-xxx580
PACK	2	2



COLOR. Refer to color range on system overview page
 USE WITH. F56 Weight Bar Plain End Cap, 7.2mm Tail Spline

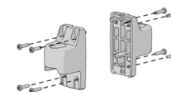
F72 PLAIN END CAP SET + SCREWS



PRICE	
CODE	RE15-0540-050000
PACK	5

COLOR. Black (050)
 USE WITH. F72 HD Weight Bar

F72 MULTI-BAR END CAPS | WIRE GUIDE + SCREWS



PRICE	
CODE	RE15-0522-xxx000
PACK	5

COLOR. Black (050), Pure White (069)
 USE WITH. F72 HD Weight Bar

WIRE GUIDE HEM BAR END CAPS

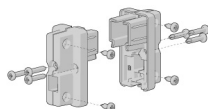
Includes Screws



PRICE	
CODE	RE15-0601-xxx001
PACK	5

COLOR. Black (050), Pure White (069)
 USE WITH. F56 Weight Bar

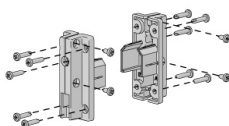
F56 LOCK END CAP SET



PRICE	
CODE	RE20-0303-xxx002
PACK	10

COLOR. Black (050), Pure White (069)
 USE WITH. F56 Weight Bar, Ultra Lock V2

F72 MULTI-BAR END CAP

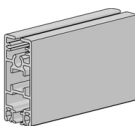


PRICE	
CODE	RE15-0512-050000
PACK	5

COLOR. Black (050)
 USE WITH. F72 HD Weight Bar, Ultra-Lock V2

F72 HD EXTERNAL WEIGHT BAR

22ft (7m) Piece



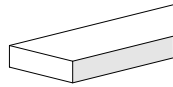
TYPE	Mill (000)	Colors - refer below
PRICE		
CODE	RE15-0112-000700	RE15-0112-xxx700
PACK	1	1

COLOR. Refer to color range on system overview page
 USE WITH. F72 End Caps, Ultra Lock V2, Flat Ballast, 7mm Fabric Spline, 15mm PVC Spline

20 X 5MM BALLAST X 2M (0.8KG/M) | WRAPPED

PRICE	
CODE	SB91-1015-050200
PACK	10

COLOR. Black (050)
USE WITH. F56 Weight Bar

**25MM STRAIGHT DROP LOOP**

PRICE	
CODE	RE91-1102-050025
PACK	10

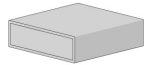
COLOR. Black (050)
USE WITH. F56 weight bar

**FLAT BALLAST BAR - WRAPPED**

0.98" x 0.31" x 6.6ft Length

PRICE	
CODE	SB91-1018-050200
PACK	5

COLOR. Black (050)
USE WITH. F72 HD Weight Bar

**STRAIGHT DROP PAD EYE SADDLE - 30MM**

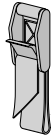
PRICE	
CODE	RE91-1104-013030
PACK	10

COLOR. Polished Stainless Steel (013)
USE WITH. Straight Drop Spring Clip - 50mm

**25MM CAM BUCKLE & STRAP ASSEMBLY**

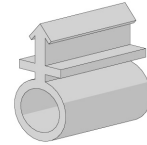
PRICE	
CODE	RE91-0100-025025
PACK	2

COLOR. Silver Zinc Plated (025)
USE WITH. 25mm straight drop loop, 28mm footmans loop

**WEIGHT BAR BUBBLE SEAL PUSH FIT**

TYPE	429ft (150m)
PRICE	
CODE	SB91-0013-050150
PACK	150

COLOR. Black (050)
USE WITH. F56 Weight Bar, F72 HD Weight Bar

**25MM FOOTMANS LOOP**

PRICE	
CODE	RE91-1101-013025
PACK	10

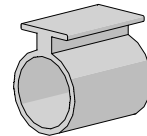
COLOR. Stainless Steel (013)
USE WITH. 25mm strap down loop

**BUBBLE SEAL STRIP**

19ft (5.8m) piece

PRICE	
CODE	SB91-0001-050580
PACK	10

COLOR. Black (050)
USE WITH. F56 Weight bar, Zipscreen Weight Bar Latch

**STRAIGHT DROP SPRING CLIP - 50MM**

PRICE	
CODE	RE91-1103-009050
PACK	10

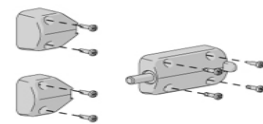
COLOR. Stainless Steel (009)
USE WITH. 25mm straight drop loop & pad eye saddle

**ZIPSCREEN WEIGHT BAR LATCH**

+ Screws

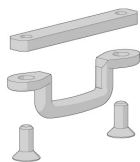
PRICE	
CODE	SB07-2103-050001
PACK	10

COLOR. Black (050)
USE WITH. Weight Bar, U Mounting Rail

**F72 FOOTMANS LOOP KIT**

PRICE	
CODE	RE91-1111-013025
PACK	5

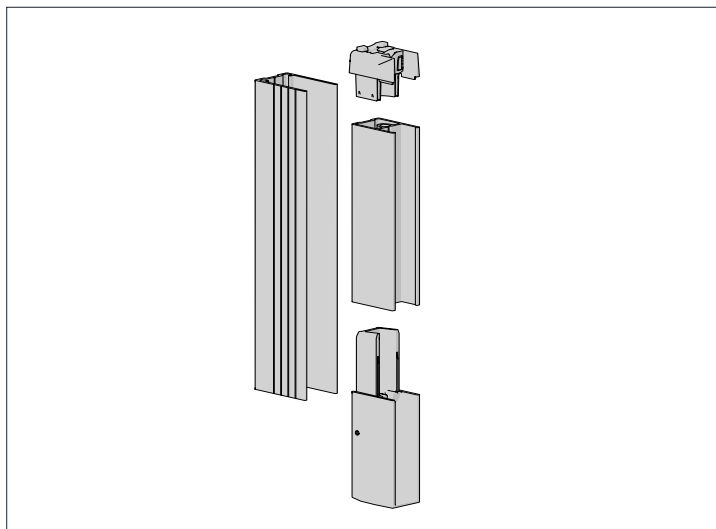
COLOR. Stainless Steel (013)
USE WITH. F72 HD Weight Bar

**16MM BUBBLE SEAL | F72**

PRICE	
CODE	SB91-0018-050040
PACK	40

COLOR. Black (050)
USE WITH. F72 HD Weight Bar

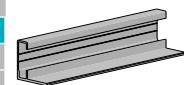




ZIP - L FIXING RAIL | BOX 160/190

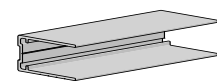
18ft (5.5m) length ****COMING SOON****

TYPE	Mill (000)	Colors - refer below
PRICE		
CODE	SB04-0708-000550	SB04-0708-xxx550
PACK	8	8



COLOR. Txd Black (150), Txd White (169), Txd Bronze (180)
 USE WITH. Box 160/190, Extreme Open Brackets

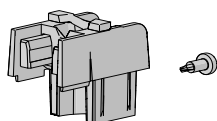
ZIPSCREEN | U MOUNTING RAIL



SIZE	18ft (5.5m)	18ft (5.5m) piece
TYPE	Mill (000)	Colors - refer below
PRICE		
CODE	SB04-0702-000550	SB04-0702-xxx550
PACK	10	10

COLOR. Refer to color range on system overview page
 USE WITH. Zip Inner Rail, L Fixing Rail, End Plate set

ZIPSCREEN - FUNNEL W/ INTEGRATED TOP STOP + SCREW



PRICE	
CODE	SB05-1412-050001
PACK	50

COLOR. Black (050)
 USE WITH. Zip Inner Rail

ZIPSCREEN | ZIP INNER RAIL

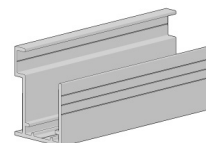


SIZE	18ft (5.5m) piece	18ft (5.5m) piece
TYPE	Mill (000)	Colors - refer below
PRICE		
CODE	SB04-0701-000550	SB04-0701-xxx550
PACK	10	10

COLOR. Refer to color range on system overview page
 USE WITH. U Mounting Rail, Inner Rail Funnel & Stop Set, Inner Rail Bottom Cap Set

ZIPSCREEN | FACE FIX - U MOUNTING RAIL

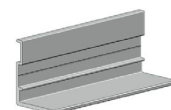
18ft (5.5m) length



PRICE	
CODE	SB04-0705-000550
PACK	8

COLOR. Mill (000)
 USE WITH. Zip Inner Rail, End Plate set

ZIPSCREEN | L FIXING RAIL

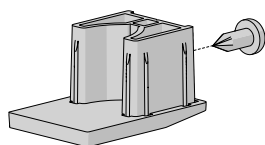


SIZE	18ft (5.5m) piece	18ft (5.5m) piece
TYPE	Mill (000)	Color - refer below
PRICE		
CODE	SB04-0703-000550	SB04-0703-xxx550
PACK	10	10

COLOR. Refer to color range on system overview page
 USE WITH. U Mounting Rail

ZIPSCREEN | ZIP INNER RAIL BOTTOM CAP SET

+ Screw



PRICE	
CODE	SB05-1511-050001
PACK	50

COLOR. Black (050)
 USE WITH. Zip Inner Rail

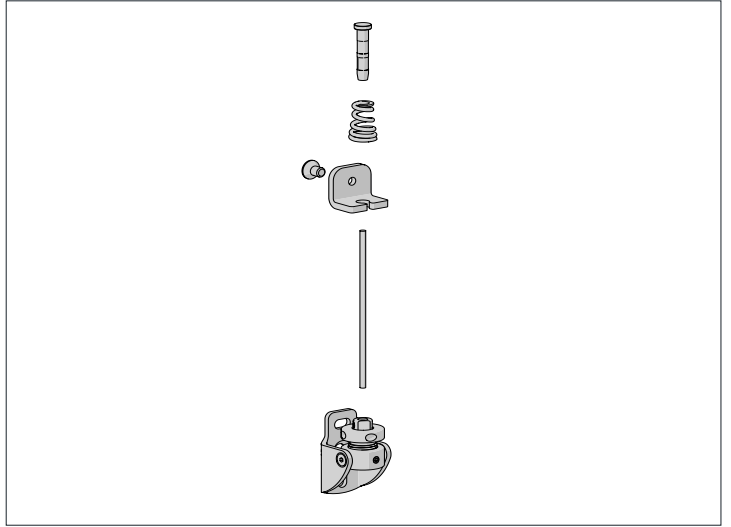
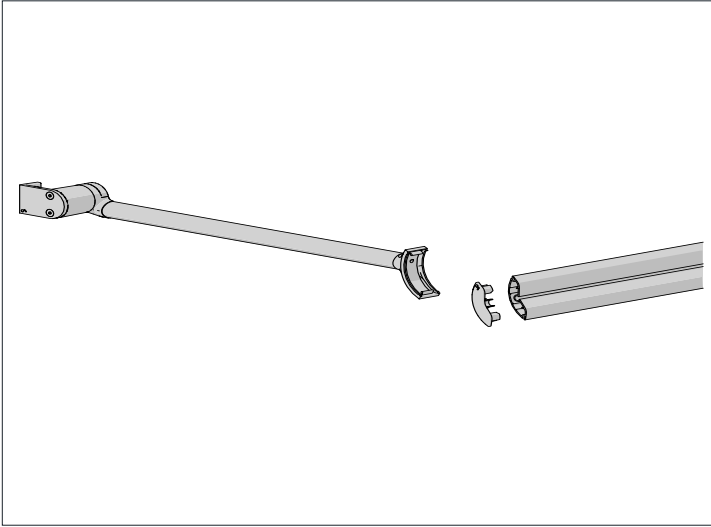
ULTRA LOCK V2

Kit Assembly (Pin & Latch only)



PRICE	
CODE	RE15-0422-050001
PACK	5

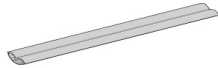
COLOR. Black (050)
 USE WITH. Weight Bars, Inner Rail



PIVOT ARM TERMINAL BAR

16.4ft (5m) Piece

PRICE	
CODE	RE29-0102-xxx500
PACK	1

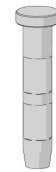


COLOR. Pure White (069), Black (050)
 USE WITH. Pivot Arms and cover caps

DOME HEAD TERMINAL

For 3.2mm Wire

PRICE	
CODE	RE24-1312-009002
PACK	20

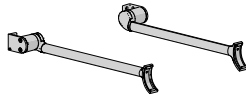


COLOR. Polished Stainless Steel (009)
 USE WITH. 3.2mm Wire Tensioning Guide

PIVOT ARMS

1 Set = 2 Arms

TYPE	5.25ft (1.6m)
PRICE	
CODE	AW05-0701-xxx160
PACK	0



COLOR. Black (050), Pure White (069)
 USE WITH. Pivot Arm Terminal Bar

WIRE TENSIONING GUIDE - 3.2MM

Thread: 1 x 19 | 1 Roll = 164ft (50m)

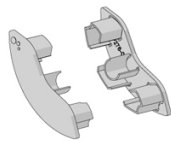
PRICE	
CODE	RB91-3602-010032
PACK	1



COLOR. Stainless Steel (010)
 USE WITH. Dome Head Terminal

PIVOT ARM COVER CAP FOR TERMINAL BAR

PRICE	
CODE	AW05-0801-xxx000
PACK	1

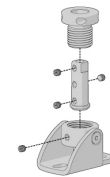


COLOR. White (064), Black (050)
 USE WITH. Pivot Arm Terminal Bar

BOTTOM WIRE GUIDE SWIVEL BRACKET

Floor/Wall Mount

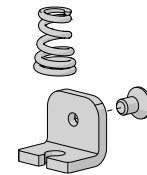
PRICE	
CODE	RE24-2205-009000
PACK	4



COLOR. Polished Stainless Steel (009)
 USE WITH. Swaged Dome Stud Terminal, 3.2mm Wire

WIRE GUIDE TOP SADDLE TERMINAL KIT

PRICE	
CODE	RE24-4004-010032
PACK	8



COLOR. Stainless Steel (010)
 USE WITH. Open Brackets

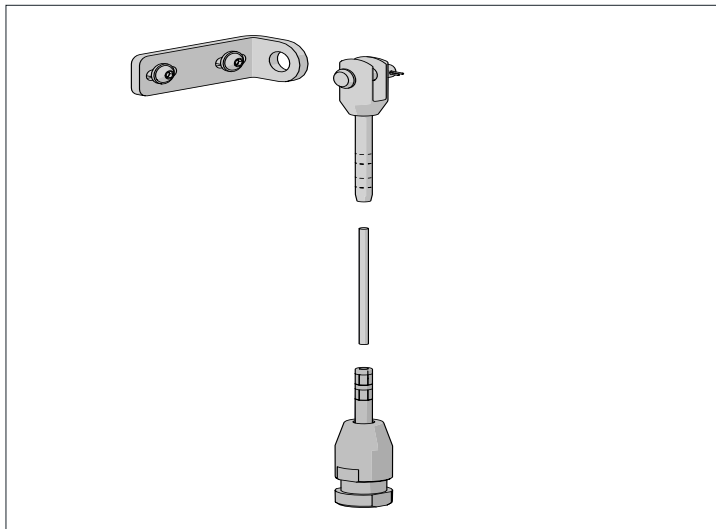
SWAGED DOME STUD TERMINAL

13.7ft (4.2m) Wire

PRICE	
CODE	RE24-1312-009420
PACK	4



COLOR. Polished Stainless Steel (009)
 USE WITH. Wire Guide Top Saddle Terminal Kit w/ Spring

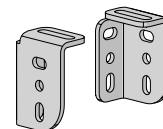


WALL MOUNTING L BRACKET - LH AND RH SET

3.54" x 1.5" (90mm x 38mm)

PRICE	
CODE	RE24-2301-009090
PACK	1

COLOR. Polished Stainless Steel (009)
USE WITH. Threaded Stud Terminal



THREADED STUD TERMINAL

+ nut & washer

PRICE	
CODE	RE24-1401-009040
PACK	2

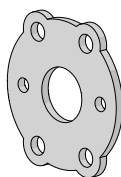
COLOR. Polished Stainless Steel (009)
USE WITH. Swage Fork Terminal



ZAMAK ADAPTER SPACER

PRICE	
CODE	RB80-0411-025050
PACK	1

COLOR. Zinc Plated (025)
USE WITH. Zamak Adapter



TENSION SPRING

14.5 I.D. x 23.5 O.D x 50mm

PRICE	
CODE	RE24-9101-009050
PACK	2

COLOR. Polished Stainless Steel (009)
USE WITH. Threaded Stud Terminal

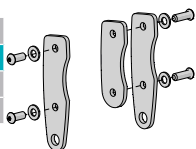


MOTOR EXTREME WIRE GUIDE BRACKET ADAPTER KIT

Outside / Wall Mount

TYPE	Zinc Plated	Colors - refer below
PRICE		
CODE	RB80-0476-025100	RB80-0476-xxx100
PACK	1	1

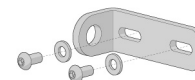
COLOR. Black (050), Pure White (069)
USE WITH. Extreme Bracket Set - Outside/ Wall Mount



BOX 190 WIRE GUIDE ADAPTER PLATE

PRICE	
CODE	RB80-0481-012000
PACK	2

COLOR. Stainless Steel (012)
USE WITH. Box 190 end plates and fork terminal

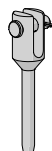


SWAGE FORK TERMINAL

0.16" (4mm) stainless steel wire

PRICE	
CODE	RE24-1314-009400
PACK	2

COLOR. Polished Stainless Steel (009)
USE WITH. Extreme Bracket Set - Outside/Wall Mount, Wire Guide Cable



WIRE GUIDE TENSIONING CABLE 4MM

164ft (50m) Roll

PRICE	
CODE	RB91-3602-006040
PACK	1

COLOR. Stainless Steel (006)
USE WITH. Flat Head Stud & Swage Fork Terminals, F72 HD Weight Bar End Cap



TENSIONING BRACKET & FLAT HEAD STUD TERMINAL

0.16" (4mm) stainless steel wire

PRICE	
CODE	RE24-2601-009040
PACK	2

COLOR. Polished Stainless Steel (009)
USE WITH. 4mm Wire Guide Cable



AUTOMATE | SOLAR WIND/ LIGHT SENSOR

TYPE	SOLAR POWERED
PRICE	
CODE	MT02-0301-072001
PACK	1

COLOR. White [072]
 USE WITH. AUTOMATE FT Motor

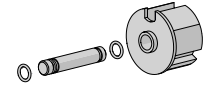


IDLER HOUSING & PIN KIT

63mm **WHILE SUPPLIES LAST**

PRICE	
CODE	RE01-0212-050063
PACK	5

COLOR. Black [050]
 USE WITH. 63mm Tube, Zipscreen Reducer, Idler Bracket



STAINLESS STEEL RIVET

0.16" O.D [Grip Range 0.126" - 0.189"]

PRICE	
CODE	HD86-0332-010009
PACK	100

COLOR. Stainless Steel [010]
 USE WITH. Zipscreen U Mounting Rail, Zip Inner Rail, L Fixing Rail

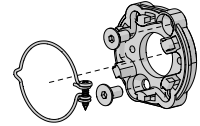


UNIVERSAL ZAMAK ADAPTER

with Lock Ring & screws

PRICE	
CODE	RB56-0762-014050
PACK	1

COLOR. Cast Silver [014]
 USE WITH. Extreme Square Motor Bracket Plate, AX Motors



SOMFY DRIVE WHEEL

TYPE	63mm	78mm
PRICE		
CODE	RE01-0663-050003	RE01-0678-050003
PACK	5	5

COLOR. Black [050]
 USE WITH. M50 Somfy Round Head Motor

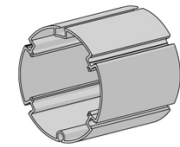


ALUMINUM TUBE | S100 - 160 EXTRA HEAVY DUTY

O.D. 6.3" x 22.9ft (160mm x 7m)

TYPE	22.9ft (7m)
PRICE	
CODE	RB93-0160-000700
PACK	1

COLOR. Mill [000]
 USE WITH. S100 - 130 Tube, Tail Spline

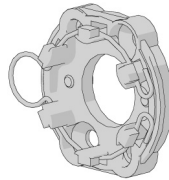


UNIV ZAMAK ADAPTER & LOCK RING

M6 x 10mm (open brackets)

TYPE	Universal
PRICE	
CODE	RB56-0763-014050
PACK	1

COLOR. Cast Silver [014]
 USE WITH. Open Brackets

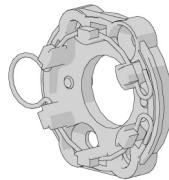


UNIV ZAMAK ADAPTER & LOCK RING

M6 X 12mm (boxed system)

TYPE	Universal
PRICE	
CODE	RB56-0764-014050
PACK	1

COLOR. Cast Silver [014]
 USE WITH. Box 120 system

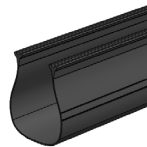


ULTRA LOCK SEAL V3

164ft (50m) Roll

PRICE	
CODE	SB91-0008-050050
PACK	50

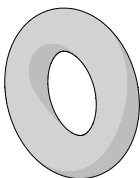
COLOR. Black [050]
 USE WITH. Zipscreen Ultra-Lock V2, F56 Weight Bar, F72 HD Weight Bar



SPARE PARTS

BOX 120 END PLATE - O-RING, EPDM, METRIC, 6.0 ID X 3.0 CS

PRICE	
CODE	HD87-1060-050030
PACK	1000



COLOR. Black (050)
 USE WITH. BOX 120 End Plates (RE01-1101-xxx120)

BOX 120 END PLATE COVER, BLACK

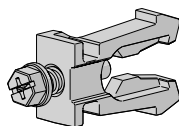
PRICE	
CODE	ME01-1101-xxx905
PACK	4



COLOR. Refer to color range on system overview page
 USE WITH. BOX 120 End Plates (RE01-1101-xxx120)

IDLER/SPRING ADAPTER MKII | RETAINER CLIP + SCREW

PRICE	
CODE	RE01-0214-050004
PACK	10



COLOR. Black (050)
 USE WITH. Idler Adaptor Kit MKII (RE01-0214-050000)

SELF-DRILLING PAINTED SCREWS

PRICE	
CODE	HD82-1923-xxx013
PACK	500



COLOR. Refer to color range on system overview page