

# EASY SPRING AIR

## FEATURES & BENEFITS

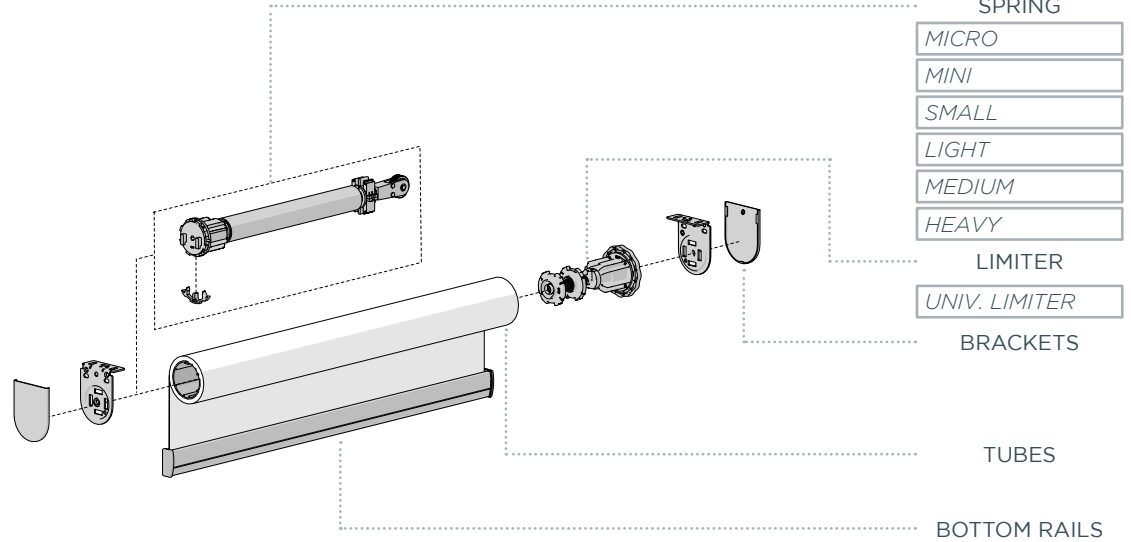
- A child-safe, chain-free shading solution.
- Intuitive operation, simply position the shade by raising or lowering the bottom rail.
- Fully adjustable spring ensures a perfectly balanced shade in every installation.
- Limiter prevents accidental pre-tension loss.
- Tension Lock securely retains pre-tension during transportation, reducing installation time.
- Can be made as narrow as 595mm, perfect for small window applications such as bathroom windows.



**COLOUR RANGE**  
pure white

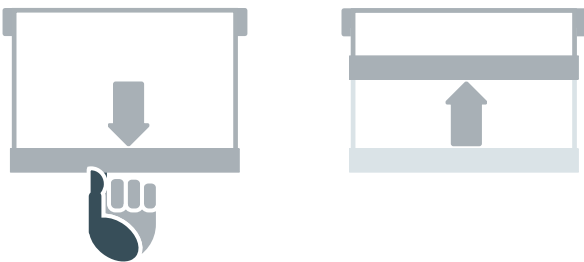
**WEBPAGE LINK**

**HARDWARE**  
**5 YEAR WARRANTY**



## KEY SYSTEM FEATURES

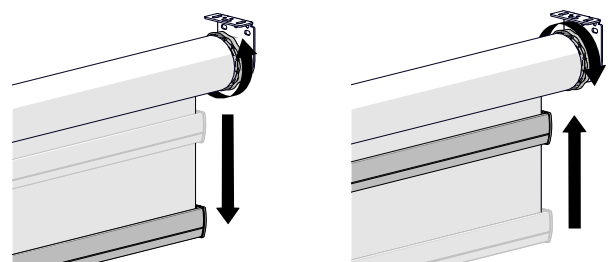
### BALANCED SHADE



1. Pull Bottom Rail downwards and release at desired location.

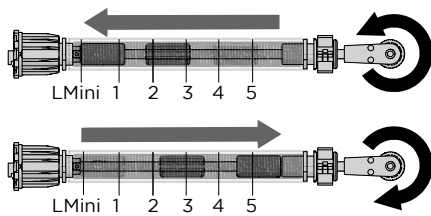
2. Raise Bottom Rail and release at desired location.

### TOP LIMIT POSITION



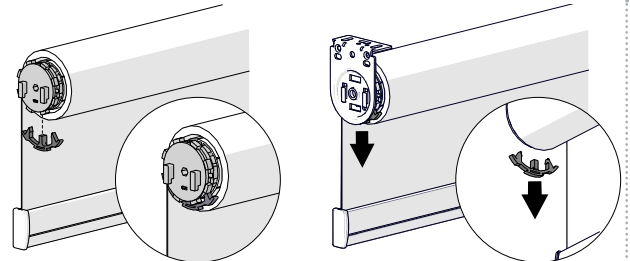
Rotate Limiter head to adjust the top limit position once installed.

### ADJUSTABLE SPRING TENSION



Spring rate can be easily adjusted via the wheel to ensure a perfectly balanced shade is achieved.

### TENSION LOCK FOR HANDLING



Attach Pre-Tension Retaining Clip during assembly.

Remove Pre-Tension Retaining Clip after installation.

## SYSTEM UPGRADES

MOUNTING RAIL

FRS VALANCE

P95 PELMET

CF90

# EASY SPRING AIR SPEC.

## SYSTEM RECOMMENDATIONS

Follow system recommendations for optimal performance.

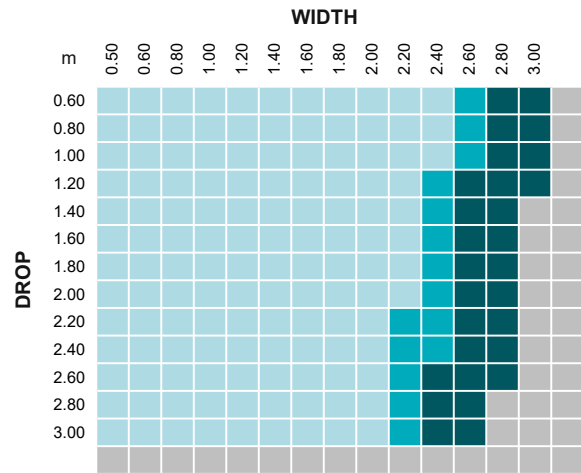
Please refer to the support documentation on the ESA product page to generate recommendations for spring selection, plug position and number of pre-turns for specific shade parameters.

Use the Roller Shade Calculator for configuring individual shades.

Use the ESA Chart Generator to generate a system chart for specific fabric, tube & bottom rail combinations.

Balanced systems perform optimally when the bottom rail weighs approximately 500g/m. Ensure the specific weight is used with the calculators.

## TUBE CAPACITY



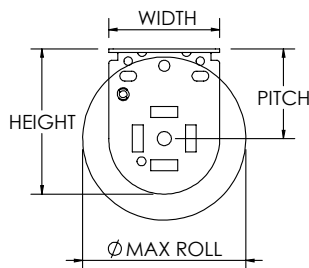
TUBE	
S45 LT	
S45 STD	
S45 HD	
OUTSIDE PRODUCT SPECIFICATION	

**PARAMETERS:**  
 FABRIC DENSITY: 390gsm  
 FABRIC THICKNESS: 0.6mm  
 WEIGHT BAR: D30 + Ballast (500g/m)

**NOTE:** Using alternative parameters will change the system capacity.

## TECHNICAL DATA

SINGLE BRACKETS	SPECIFICATIONS			MAX ROLL
	PITCH	WIDTH	HEIGHT	
LX 40mm	40mm	50mm	65mm	75mm

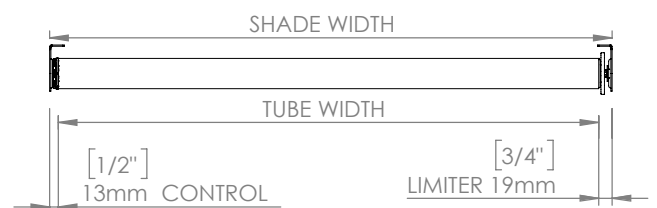


SPRING SIZE	MINIMUM SHADE WIDTH*	TUBE DEDUCTION*
MICRO	498mm	32mm
MINI	498mm	
SMALL	700mm	
LIGHT	700mm	
MEDIUM	1010mm	
HEAVY	1110mm	

\*Add +2mm for bracket covers.

TUBE WIDTH = SHADE WIDTH - [TUBE DEDUCTIONS]

Minimum Shade Width based on 5mm gap between hardware in tube.



SPRING CAPACITY	LIFTING CAPACITY		
	S45 LT TUBE	S45 STD TUBE	S45 HD TUBE
MICRO	0.39kg	0.38kg	0.34kg
MINI	1.07kg	1.04kg	0.94kg
SMALL	1.00kg	0.97kg	0.87kg
LIGHT	1.72kg	1.68kg	1.51kg
MEDIUM	3.67kg	3.59kg	3.22kg
HEAVY	4.99kg	4.88kg	4.38kg