









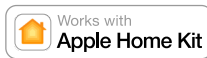


MOTORS | SUMMARY

| | Power Source | | | SPECIFICATIONS | | | | |
|--|--------------|----|----|-----------------------------|-----|----------|---------|---------|
| | Li-ion | DC | AC | 5V ZERO | 12V | 12V ZERO | 240V E6 | 240V M6 |
| KEY FEATURES SUMMARY | | | | | | | | |
|  SIMPLIFIED RETRO-FIT Motor can replace a chain winder without modifying the hardware, maintaining a minimal hardware gap. | ✓ | ✓ | | ✓ | | | | |
|  PATENTED MOTOR HEAD DESIGN Offers the smallest light gap and antenna cable can be concealed within the motor head. | ✓ | ✓ | | | | | | |
|  INNOVATIVE MOTOR CAP Optional, custom designed accessory for no visible wires. | ✓ | ✓ | | | | | | |
|  ELEGANT SOFT STOP Slows the motor down prior to reaching shade limits, coming to a gradual stop. | ✓ | ✓ | | | | | | |
|  MICRO USB CHARGING Custom motor charger not required. Utilise any micro USB cable and charger to renew battery. | ✓ | | | | | | | |
|  CONTINUOUS POWER A continuously powered solution that has three optional 12V power sources. | | ✓ | | | | | | |
|  CONTINUOUS POWER A continuously powered solution connected to the mains 240V electrical grid. | | | ✓ | | | | | |
|  BATTERY CHECK When paired with Push series remotes, motor will move shade to indicate battery percentage remaining. | ✓ | | | | | | | |
|  NARROW SHADE WIDTHS Shades can be made at a minimum width of 432mm and powered using external battery pack for door shading applications. | | ✓ | | | | | | |
|  RELIABLE OPERATION Hardwired installation prevents interference from other devices. | | | ✓ | | | | | |
| | | | | TORQUE | | | | |
| | | | | 0.7Nm | ✓ | | | |
| | | | | 1.1Nm | ✓ | | ✓ | |
| | | | | 2.0Nm | ✓ | | ✓ | |
| | | | | 3.0Nm | | ✓ | | |
| | | | | 6.0Nm | | | ✓ | ✓ |
| | | | | POWER | | | | |
| | | | | Lithium-ion Battery | ✓ | ✓ | | |
| | | | | DC 12V Low Voltage | | | ✓ | |
| | | | | AC 240V Mains | | | | ✓ |
| | | | | FEATURES | | | | |
| | | | | Zero Motor Head | ✓ | | ✓ | |
| | | | | Motor Cap | ✓ | | ✓ | |
| | | | | Ultra Quiet | ✓ | | ✓ | |
| | | | | Elegant Soft Stop | ✓ | | ✓ | |
| | | | | Battery Check Action | ✓ | | ✓ | |
| | | | | Micro USB Charging | ✓ | | | |
| | | | | Secure Hold | ✓ | ✓ | ✓ | |
| | | | | Simplified Retro-Fit | ✓ | | ✓ | |
| | | | | Bidirectional Communication | ✓ | ✓ | ✓ | ✓ |
| | | | | Adjustable Speed | ✓ | ✓ | ✓ | |
| | | | | Simplified Setup | ✓ | ✓ | ✓ | ✓ |
| | | | | Favourite Positioning | ✓ | ✓ | ✓ | ✓ |
| | | | | Precise Limit Adjustment | ✓ | ✓ | ✓ | ✓ |
| | | | | Electronic Limit Setting | ✓ | ✓ | ✓ | ✓ |
| | | | | Mechanical Limit Setting | | | | ✓ |
| | | | | ACCESSORIES | | | | |
| | | | | Push Remotes | ✓ | ✓ | ✓ | ✓ |
| | | | | Pulse 2 Hub & App | ✓ | ✓ | ✓ | ✓ |
| | | | | Wall Switch | ✓ | ✓ | ✓ | ✓ |
| | | | | Solar Panel V2 | ✓ | | | |
| | | | | Internal Sun Sensor | ✓ | ✓ | ✓ | ✓ |
| | | | | ARC Repeater | ✓ | ✓ | ✓ | ✓ |
| | | | | ARC Relay Module | ✓ | ✓ | ✓ | ✓ |
| | | | | DC Power Distribution Panel | | | ✓ | |
| | | | | Rechargeable Battery Pack | | | ✓ | |
| | | | | Extension Cables | ✓ | ✓ | ✓ | |
| | | | | Wall Charger | ✓ | ✓ | | |

AUTOMATE MOTORS ARE COMPATIBLE WITH THE FOLLOWING:



MOTORS | CONTROLLERS

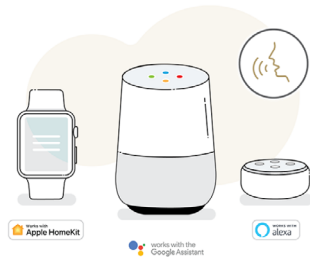
HOME AUTOMATION FEATURES

PULSE 2 APP

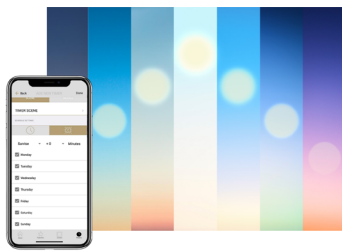


Effortless control of motorised shades when at home or away. Personalise the daily routine via groups, rooms and timers.

VOICE CONTROL



DYNAMIC SUNRISE/SUNSET FUNCTION



Set shades to follow the sun.

PULSE2 LINQ



Connect to smart home systems.

HOME AUTOMATION | PULSE 2.0

- Group Automate shades by room and conveniently control them accordingly.
- Personalise shade control and organise how your shades operate by specific daily events or scenes automatically at the optimal time.
- Roller shades, Drapery, Outdoor Shades, Awnings... control every shade type from one screen.
- Installers have access to information that assists them identify potential issues.
- The signal indicator highlights when there is no connection between the motor and the hub, to assist with troubleshooting.
- The APP is available in English, Italian, Dutch, French or German.



REMOTE CONTROLS

PUSH SERIES



Push ONE, 5 Channel & 15 Channel Remotes

WALL CONTROLS



1, 2 & 15 Channel Remotes

ACCESSORIES | COMMERCIAL

DC POWER DISTRIBUTION PANEL



- Power your Automate DCRF motors from a compact, central location that can service up to 18 motors.
- Easily check each individual motors power status by viewing the prominent green LED's on the DC Power Panel.
- The panel can be used with many different wire types (from 26 to 14 AWG). Any pre-wired installation may readily use DCRF motors and the Power Distribution Panel.

ACCESSORIES | GENERAL

ARC REPEATER



Extend range of ARC Protocols.

INTERNAL SUN SENSOR



Control shade with 4 preset light thresholds.

ARC RELAY TRANSMITTER

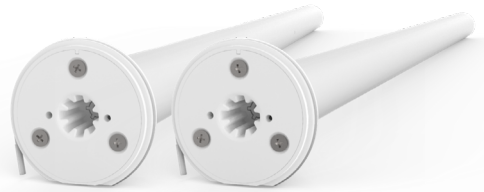


- Provide interface between third party smart home motor systems and ARC motors.
- Three contact inputs - Up, Down & Stop.
- Group Motor Control.
- Wireless control of ARC motors.
- Roller mode and Step mode for venetian motors.
- 12V or 24V power source compatible.

MOTORS | BATTERY

FEATURES & BENEFITS

- Patent ZERO motor head conceals all wires by wrapping them around the head.
- Retro-fit solution, turn manual blinds into motorised shades with ease, simply remove winder, insert motor & operate.
- Soft Stop technology which slows the blind prior to stopping.
- Micro USB 5 volt charging.
- Colour matching motor head cap conceals hardware.
- Long lasting battery - up to 500 cycles per charge.



COLOUR RANGE

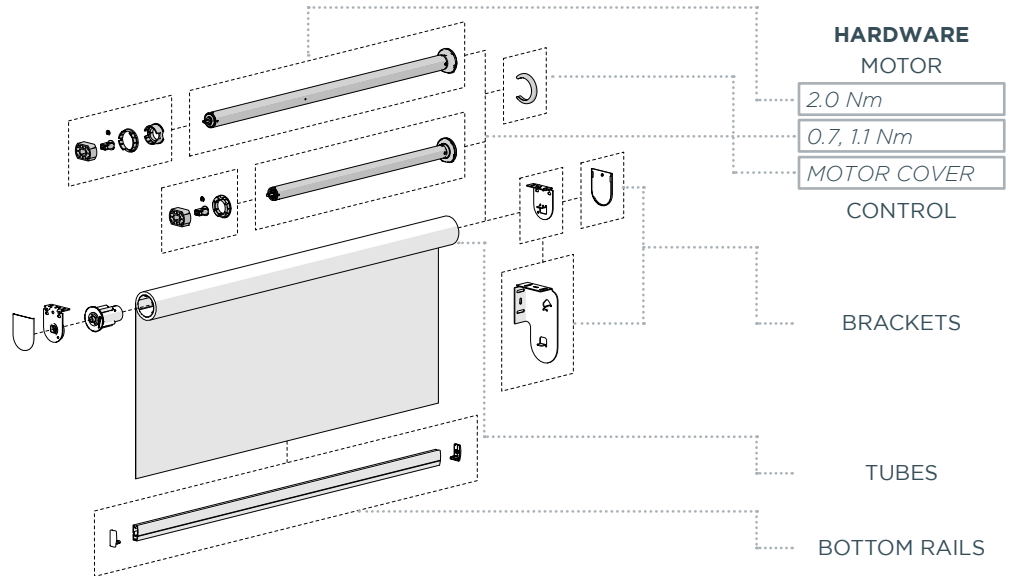
black

pure white

WEBPAGE LINK

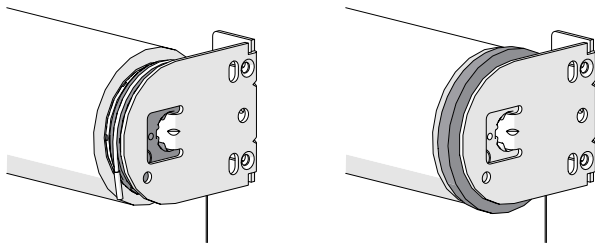
MOTOR HARDWARE

5 YEAR WARRANTY



KEY SYSTEM FEATURES

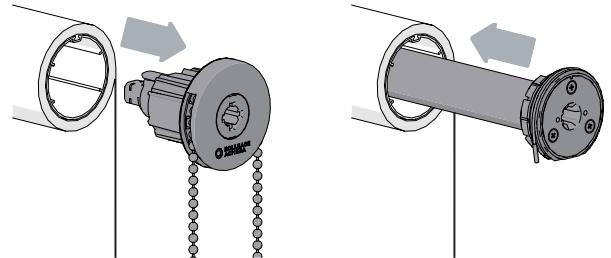
ZERO VISIBLE WIRES



The motor head has a slot which retains the antenna.

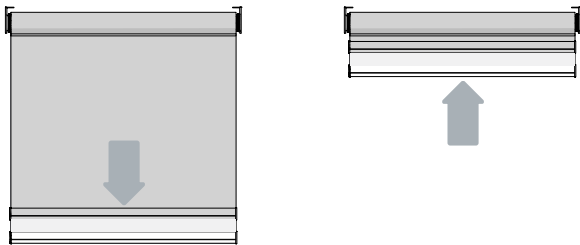
Hide the motor head with a colour matched Motor Cap.

RETRO-FIT SOLUTION



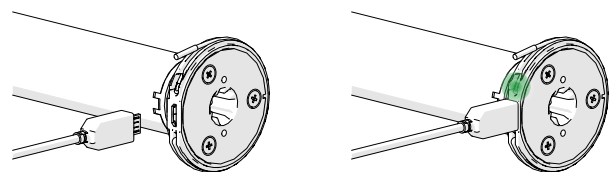
Replace a chain control with a ZERO Li-ion motor without having to change any existing hardware.

SOFT STOP



Shade gradually reduces speed when coming to a stop for ultra-smooth movement.

MICRO USB CHARGING



LED behind button will glow to indicate successful charging.

SYSTEM UPGRADES

WIRE GUIDE

EASY-LINK

MOUNTING RAIL

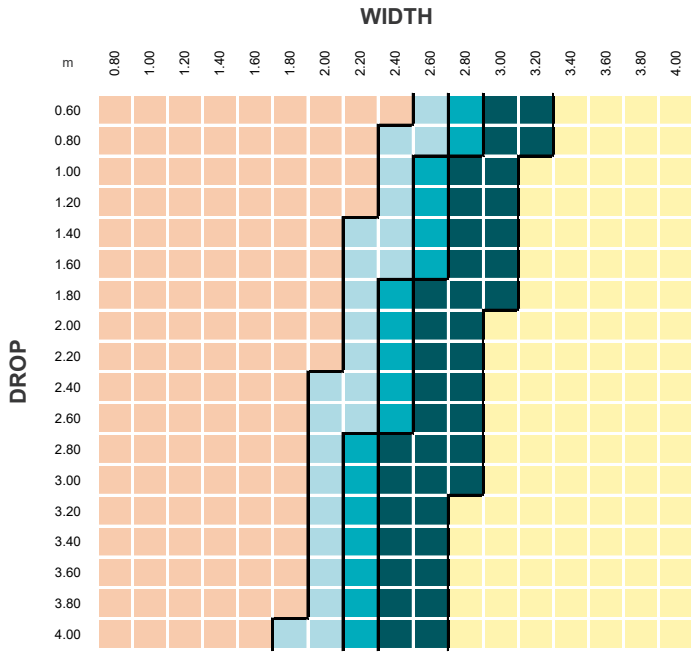
FRS VALANCE

P95 PELMET

CF90

MOTORS | BAT. SPECIFICATIONS

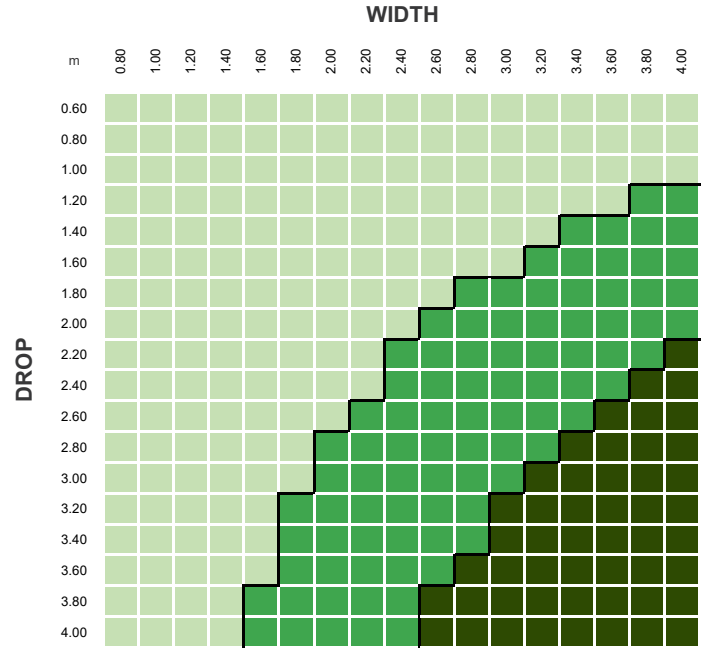
TUBE CAPACITY



| TUBES | |
|------------------|--|
| S40 STANDARD | |
| S45 LIGHT | |
| S45 STANDARD | |
| S45 HEAVY DUTY | |
| LINKED | |

PARAMETERS:
 FABRIC DENSITY: 390gsm
 FABRIC THICKNESS: 0.6mm
 WEIGHT BAR: D30 Bottom Rail
 TUBE DEFLECTION: 1.05mm/m
 NOTE: S40 IS ONLY COMPATIBLE WITH 0.7, 1.1Nm MOTORS

CONTROL CAPACITY



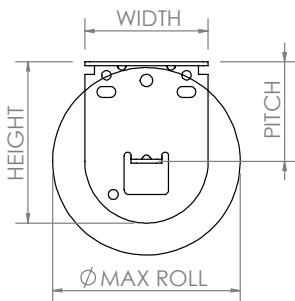
| MOTOR | |
|-----------------------|--|
| 0.7Nm | |
| 1.1Nm | |
| 2.0Nm 3.0Nm 6.0Nm | |

PARAMETERS:
 FABRIC DENSITY: 390gsm
 FABRIC THICKNESS: 0.6mm
 WEIGHT BAR: D30 Bottom Rail
 TUBE DEFLECTION: 1.05mm/m

| LIFTING CAPACITY | TUBE | | | |
|------------------|---------|--------|---------|--------|
| | S40 STD | S45 LT | S45 STD | S45 HD |
| 0.7Nm | 3.7kg | 3.3kg | 3.2kg | 2.9kg |
| 1.1Nm | 5.8kg | 5.2kg | 5.1kg | 4.6kg |
| 2.0Nm | - | 9.4kg | 9.2kg | 8.3kg |

TECHNICAL DATA

| SINGLE BRACKETS | SPECIFICATIONS | | | MAX ROLL |
|-----------------|----------------|-------|--------|----------|
| | PITCH | WIDTH | HEIGHT | |
| AX | 40mm | 40mm | 60mm | 75mm |
| | 55mm | 40mm | 75mm | 105mm |
| VX/LX | 40mm | 50mm | 65mm | 75mm |
| LX | 55mm | 50mm | 80mm | 105mm |

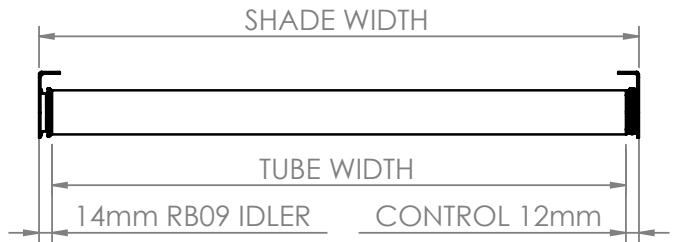


| CONTROL OPTIONS | MINIMUM SHADE WIDTH (no covers) | TUBE DEDUCTIONS | |
|-----------------|---------------------------------|-------------------|---------------------|
| | | NO BRACKET COVERS | WITH BRACKET COVERS |
| ZERO 0.7Nm | 569mm | 26mm | *28mm |
| ZERO 1.1Nm | 642mm | | |
| ZERO 2.0Nm | 739mm | | |

*Add +1mm to deductions for Motor Cover installations.

TUBE WIDTH = SHADE WIDTH - [CONTROL + IDLER]

Minimum Shade Width based on 5mm gap between hardware in tube.



| DOUBLE BRACKETS | MAX ROLL | SLIM PROFILE TOP-FRONT Fabric Roll Options | SLIM PROFILE TOP-BACK Fabric Roll Options | SQUARE-X Fabric Roll Options | SLIMLINE-X Fabric Roll Options |
|-----------------------|----------|---|--|---------------------------------|-----------------------------------|
| SLIM PROFILE/SQUARE-X | 70mm | | | | |
| SLIMLINE-X | 65mm | | | | |

MOTORS | DC

FEATURES & BENEFITS

- Low voltage continuous powered.
- Multiple power options: Power Supply, DC Power Panel, Battery Pack.
- Patent ZERO motor head conceals all wires by wrapping them around the head.
- Retro-fit solution, turn manual blinds into motorised shades with ease, simply remove winder, insert motor & operate.
- Soft Stop technology which slows the blind prior to stopping.
- Colour matching motor head cap conceals hardware.
- Smallest motorised blind width.



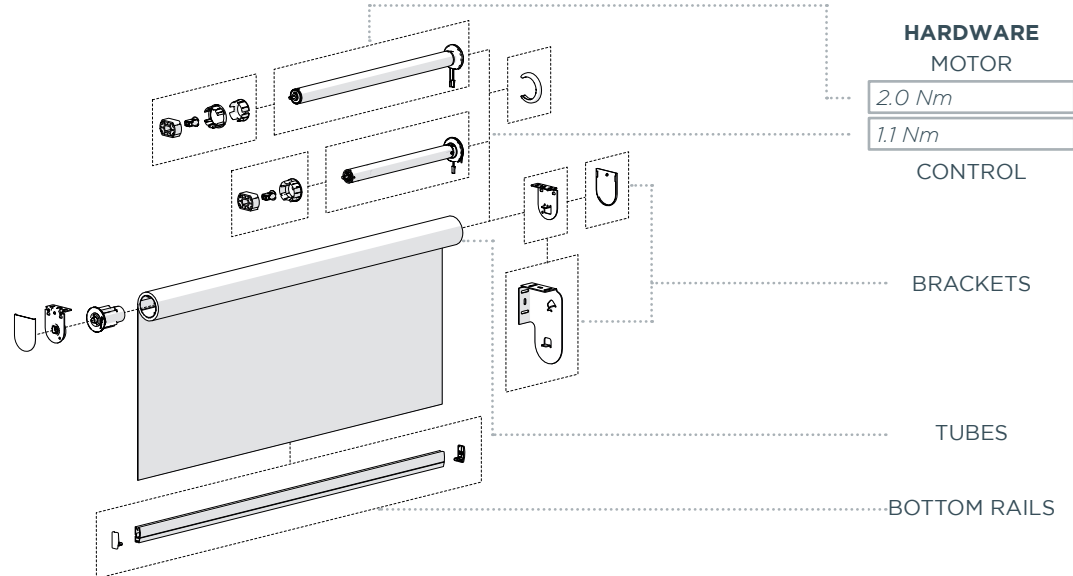
COLOUR RANGE

pure white

WEBPAGE LINK

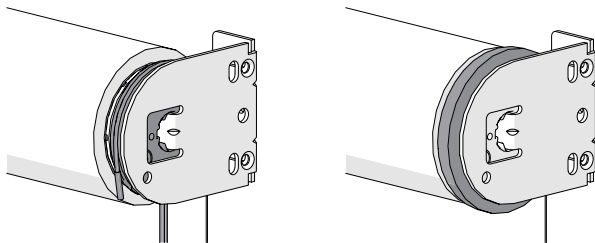
MOTOR HARDWARE

7 YEAR WARRANTY



KEY SYSTEM FEATURES

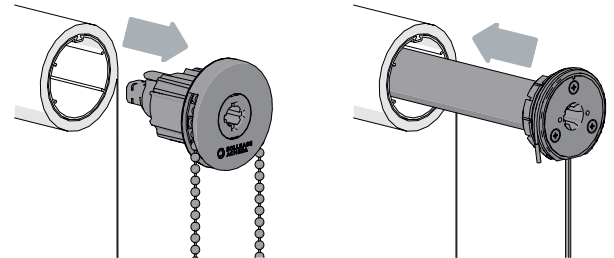
ZERO VISIBLE WIRES



The motor head has a slot which retains the antenna.

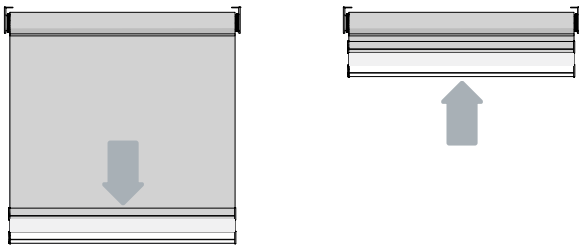
Hide the motor head with a colour matched Motor Cap.

RETRO-FIT SOLUTION



Replace a chain control with a ZERO Li-ion motor without having to change any existing hardware.

SOFT STOP



Shade gradually reduces speed when coming to a stop for ultra-smooth movement.

CHARGING OPTIONS



Power Supply

DC Power Panel

Battery Pack

SYSTEM UPGRADES

WIRE GUIDE

EASY-LINK

MOUNTING RAIL

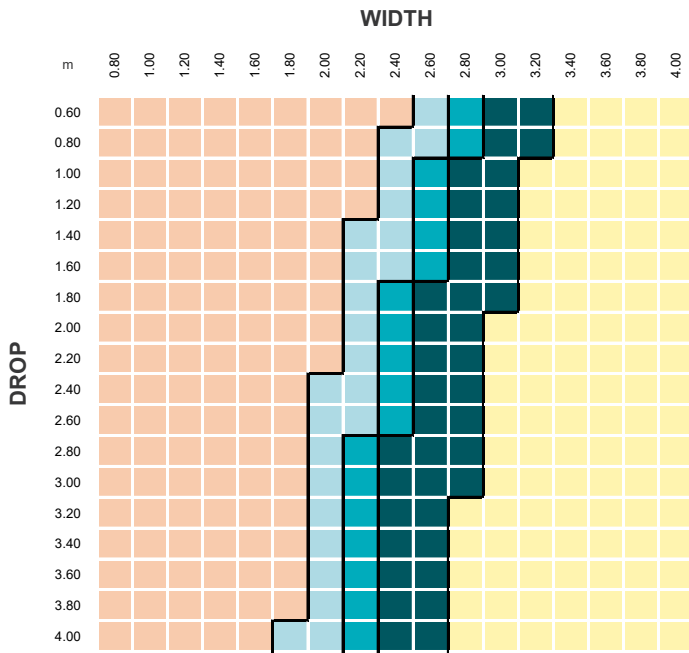
FRS VALANCE

P95 PELMET

CF90

MOTORS | DC SPECIFICATIONS

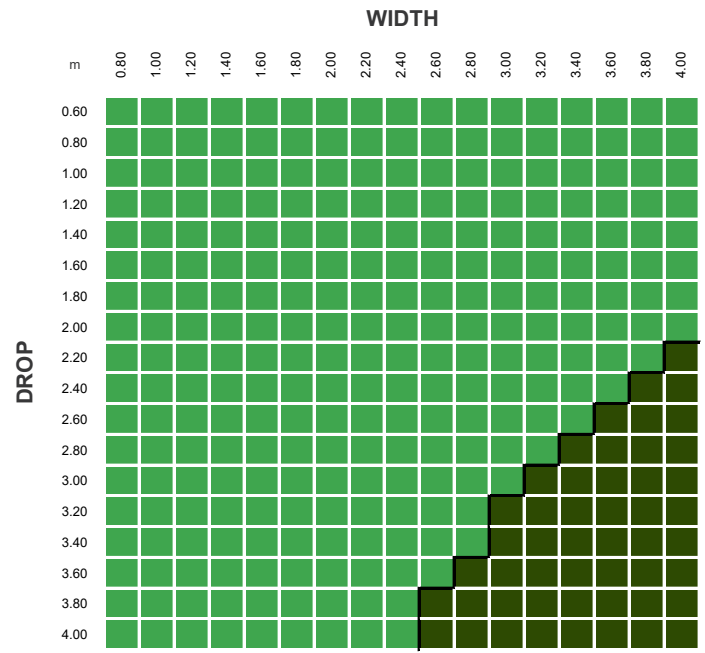
TUBE CAPACITY



| TUBES | |
|------------------|--|
| S40 STANDARD | |
| S45 LIGHT | |
| S45 STANDARD | |
| S45 HEAVY DUTY | |
| LINKED | |

PARAMETERS:
 FABRIC DENSITY: 390gsm
 FABRIC THICKNESS: 0.6mm
 WEIGHT BAR: D30 Bottom Rail
 TUBE DEFLECTION: 1.05mm/m
 NOTE: S40 IS ONLY COMPATIBLE WITH 0.7, 1.1Nm MOTORS

CONTROL CAPACITY



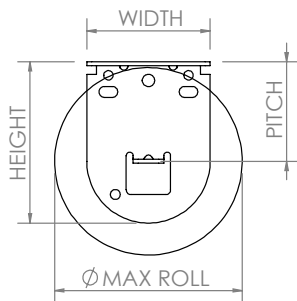
| MOTOR | |
|-----------------------|--|
| 1.1Nm | |
| 2.0Nm 3.0Nm 6.0Nm | |

PARAMETERS:
 FABRIC DENSITY: 390gsm
 FABRIC THICKNESS: 0.6mm
 WEIGHT BAR: D30 Bottom Rail
 TUBE DEFLECTION: 1.05mm/m

| LIFTING CAPACITY | TUBE | | | |
|------------------|---------|--------|---------|--------|
| | S40 STD | S45 LT | S45 STD | S45 HD |
| ZERO 1.1 Nm | 5.8kg | 5.2kg | 5.1kg | 4.6kg |
| ZERO 2.0 Nm | - | 9.4kg | 9.2kg | 8.3kg |

TECHNICAL DATA

| SINGLE BRACKETS | SPECIFICATIONS | | | MAX ROLL |
|-----------------|----------------|-------|--------|----------|
| | PITCH | WIDTH | HEIGHT | |
| AX | 40mm | 40mm | 60mm | 75mm |
| | 55mm | 40mm | 75mm | 105mm |
| VX/LX | 40mm | 50mm | 65mm | 75mm |
| LX | 55mm | 50mm | 80mm | 105mm |

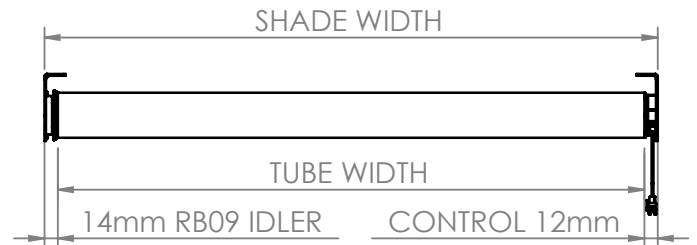


| CONTROL OPTIONS | MINIMUM SHADE WIDTH (no covers) | TUBE DEDUCTIONS | |
|-----------------|---------------------------------|-------------------|---------------------|
| | | NO BRACKET COVERS | WITH BRACKET COVERS |
| ZERO DC 1.1Nm | 432mm | 26mm | *28mm |
| ZERO DC 2.0Nm | 576mm | | |

*Add +1mm to deductions for Motor Cover installations.

TUBE WIDTH = SHADE WIDTH - [CONTROL + IDLER]

Minimum Shade Width based on 5mm gap between hardware in tube.

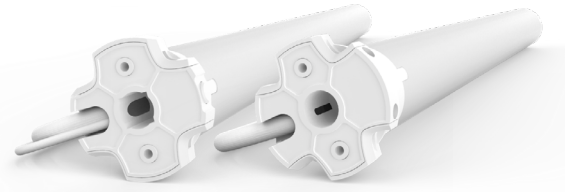


| DOUBLE BRACKETS | MAX ROLL | SLIM PROFILE TOP-FRONT Fabric Roll Options | SLIM PROFILE TOP-BACK Fabric Roll Options | SQUARE-X Fabric Roll Options | SLIMLINE-X Fabric Roll Options |
|-----------------------|----------|---|--|---------------------------------|-----------------------------------|
| SLIM PROFILE/SQUARE-X | 70mm | | | | |
| SLIMLINE-X | 65mm | | | | |

MOTORS | AC

FEATURES & BENEFITS

- Compatible with building automations system controllers.
- Control large shades with 6Nm of torque and 33rpm.
- Constant power.
- Manually set and adjust the limits of M6 motors.
- HD Adapter for double bracket installations.



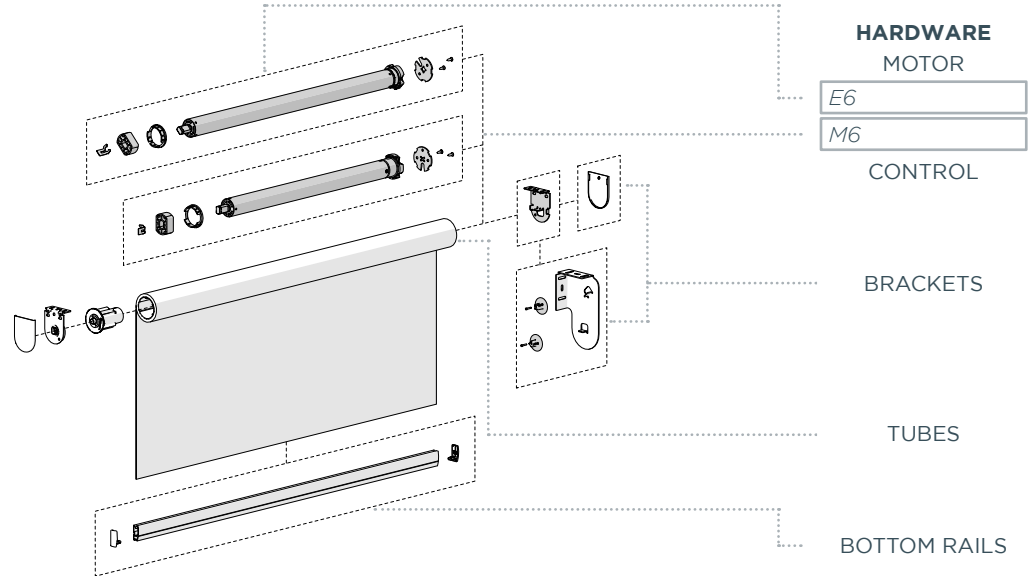
COLOUR RANGE

pure white

WEBPAGE LINK

MOTOR HARDWARE

7 YEAR WARRANTY



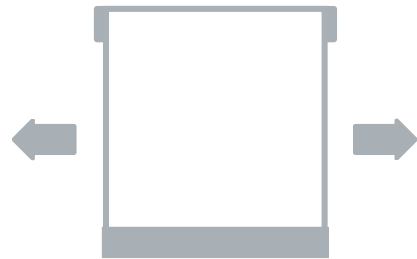
KEY SYSTEM FEATURES

BUILDING AUTOMATION SYSTEM CONTROLLERS



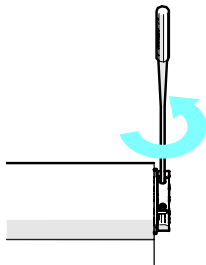
M6 AC Motor integration with smart building controllers.

ACHIEVE LARGER WINDOWS OR HEAVIER SHADES



6Nm TORQUE, 33rpm SPEED

MANUAL AUTOMATE M6 LIMIT SETTING



Manually set/adjust the limits of the M6 motor without electronic wireless controllers.

AUTOMATE E6 CONTROLLERS



Compatible with Automate ARC range of controllers.

MEDIUM SYSTEM UPGRADES & OPTIONS:

S45 TO S60

WIRE GUIDE

EASY-LINK

MOUNTING RAIL

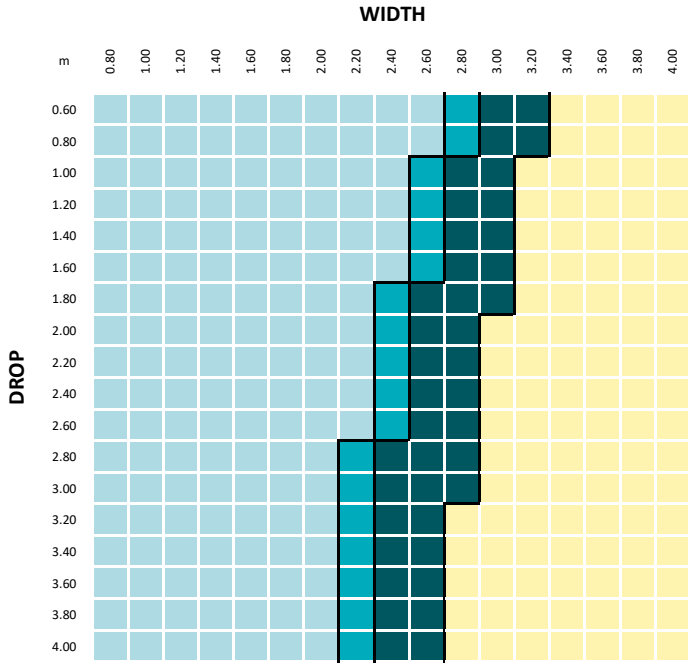
FRS VALANCE

P95 PELMET

CF90

MOTORS | AC SPECIFICATIONS

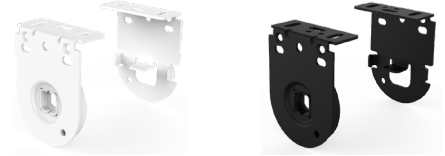
TUBE CAPACITY



| TUBES | 6.0Nm | PARAMETERS: |
|------------------|-------|-----------------------------|
| S45 LIGHT | | FABRIC DENSITY: 390gsm |
| S45 STANDARD | | FABRIC THICKNESS: 0.6mm |
| S45 HEAVY DUTY | | WEIGHT BAR: D30 Bottom Rail |
| LINKED | | TUBE DEFLECTION: 1.05mm/m |

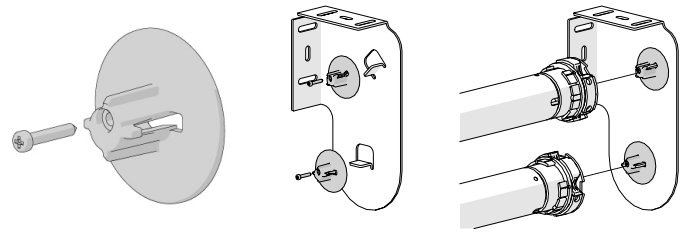
AC MOTOR DEDICATED SINGLE BRACKETS

Brackets designed to handle the increased motor capacity.



DOUBLE BRACKET COMPATIBILITY

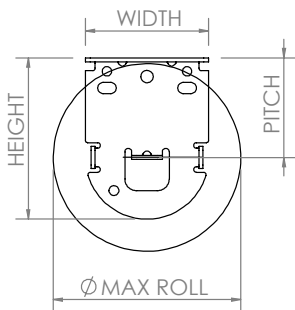
The HD Adapter increases the strength of the bracket for optimal compatibility with the Rollease Acmeda 6.0Nm motors.



| LIFTING CAPACITY | TUBE | | |
|------------------|--------|---------|--------|
| | S45 LT | S45 STD | S45 HD |
| 6Nm | 28.3kg | 27.7kg | 25.0kg |

TECHNICAL DATA

| SINGLE BRACKETS | SPECIFICATIONS | | | MAX ROLL |
|-----------------|----------------|-------|--------|----------|
| | PITCH | WIDTH | HEIGHT | |
| LX M40 RB08 | 40mm | 50mm | 65mm | 75mm |
| | 55mm | 50mm | 80mm | 105mm |
| LX M40 RB09 | 40mm | 50mm | 65mm | 75mm |
| | 55mm | 50mm | 80mm | 105mm |

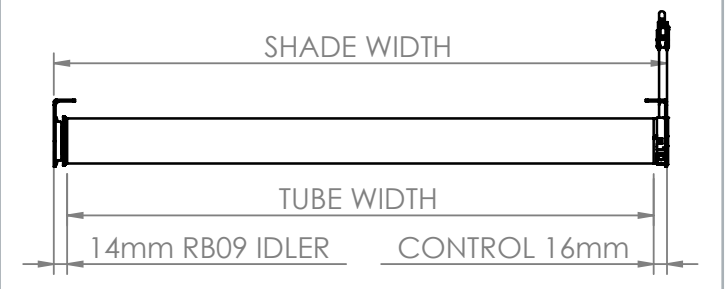


| CONTROL OPTIONS | MINIMUM SHADE WIDTH (no covers) | TUBE DEDUCTIONS | |
|-----------------|---------------------------------|-------------------|---------------------|
| | | NO BRACKET COVERS | WITH BRACKET COVERS |
| E6 | 674mm | 30mm | 32mm |
| M6 | 567mm | 30mm | 32mm |

TUBE WIDTH = SHADE WIDTH - [CONTROL + IDLER]

DOUBLE BRACKETS = ADD 2mm to all values in above table.

Minimum Shade Width based on 5mm gap between hardware in tube.



| DOUBLE BRACKETS | MAX ROLL | SLIM PROFILE TOP-FRONT Fabric Roll Options | SLIM PROFILE TOP-BACK Fabric Roll Options | SQUARE-X Fabric Roll Options | SLIMLINE-X Fabric Roll Options |
|-----------------------|----------|---|--|---------------------------------|-----------------------------------|
| SLIM PROFILE/SQUARE-X | 70mm | | | | |
| SLIMLINE-X | 65mm | | | | |