

Yuki



FEATURES

- Class 2 wind resistance according to European standard EN 13561
- Certified Italian Stainless steel screws and pins
- Wall and ceiling installation
- Adjustable pitch between 3° and 90°
- Fusion arms aligned with Piuma
- Maximum size: 500x309 cm
- Manually operated or motorised

COLOUR RANGE

Graphite



White

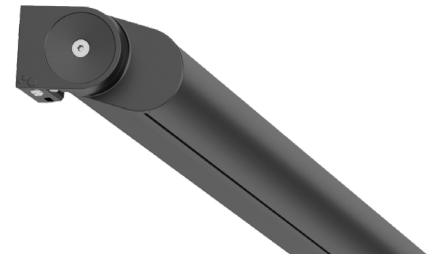
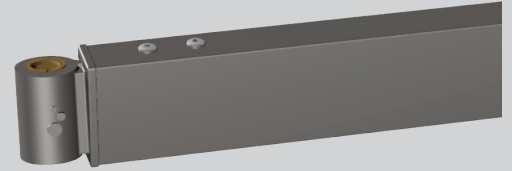


CABLE ARM SYSTEM

YUKI features the Fusion Arm with a tensioned, spring loaded, double stainless steel cable, PVC coated for added protection against corrosion. The Dynamic Arm Torsion system is specifically designed to prevent fabric damage and sagging by maintaining constant tension.

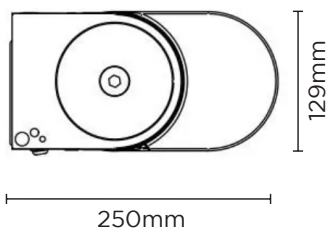
FEATURES

- Outstanding mechanical performance.
- Fabric damage prevention.
- Maximum durability.
- Arms can be adjusted to tilt in single degree increments.

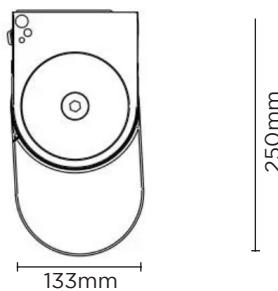


DIMENSIONS

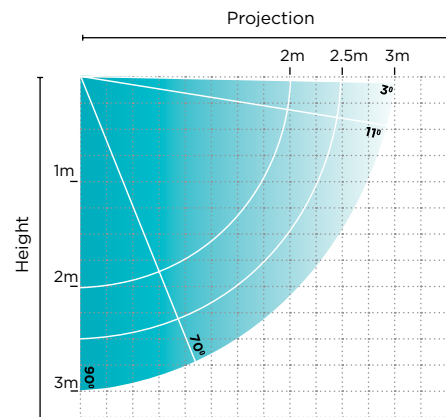
WALL MOUNTING
3° pitch



ROOF MOUNTING
90° pitch



ARM PROJECTION



Wall Mounting: 3° to 70°
Roof Mounting: 11° to 90°
Depending on manual or crank.

SYSTEM CAPACITY

Max width: 5m
Max projection: 3.09m

Wind Resistance: Class 2, 38km/h
EN 13561 (480 cm x 265 cm)

Independently tested and approved by



AUTOMATE MOTORISATION

Easily control your motorised awning with a remote control or smart phone device using the Automate App & Pulse 2 hub. Control awnings from anywhere in the world, set scenes and timers for automatic control and always know what your awnings are doing thanks to ARC bi-directional live feedback. The Pulse 2 also integrates with smart voice-assistants such as Google Assistant, Amazon Alexa and now Apple HomeKit with Siri.

