

**AUTOMATE VERSA MOTORISED CURTAIN SYSTEM**

Our Automate Versa motor and curtain track hardware offers a complete motorised curtain solution. This versatile motor easily connects to two different power sources – a rechargeable lithium-ion battery or an AC power module, providing greater flexibility at installation. Inverted mounting also offers a continuous powered solution hidden within ceiling pockets for a premium aesthetic.

**AESTHETICAL FEATURES**

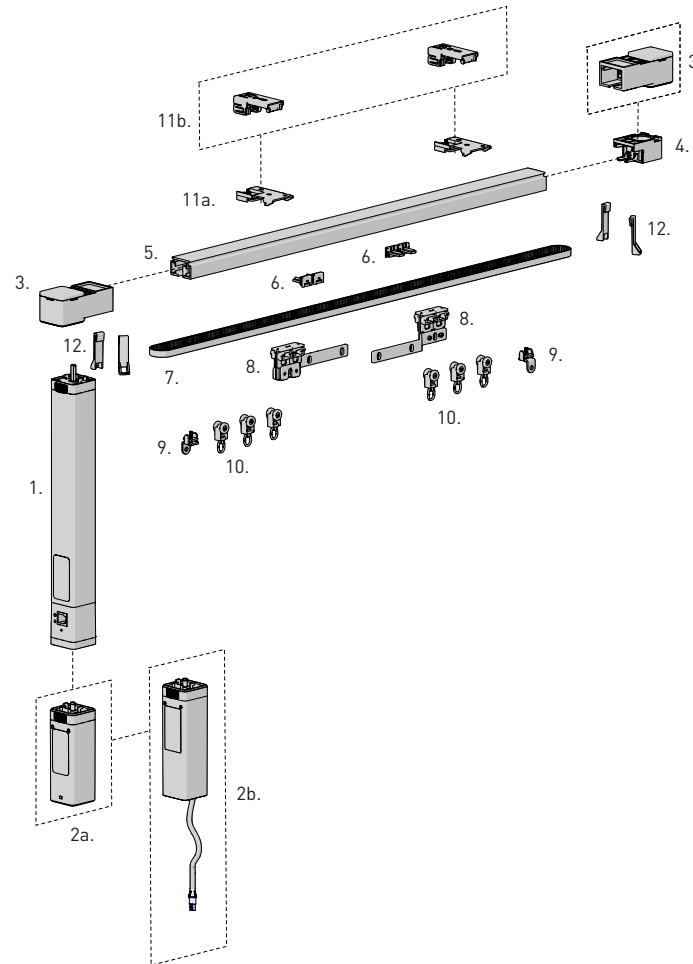
- Slim profile curtain track & motor.
- Track Joiner allowing multiple tracks to be seamlessly linked.
- S-Fold curtain compatible parts for snap tape.

**FUNCTIONAL BENEFITS**

- Inverted mounting option for ceiling pocket installations.
- Connects to two different power sources – a rechargeable lithium-ion battery or an AC power module.
- Centre and one way draw for straight applications.
- Soft open and close auto adjusting speed limits.
- Manual override function to open/close with one light touch.
- Quiet motor.
- 50kg max operating capacity.

**INSTALLATION/ ASSEMBLY FEATURES**

- Easy automatic limit setting.
- Top and Wall Fix installations.
- Double bracket option for sheer and blackout application.

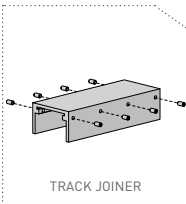


**SYSTEM INDEX**

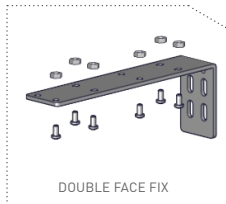
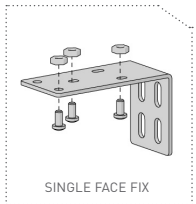
|     |   |
|-----|---|
| 1.  | AUTOMATE   Versa Drapery Motor<br>MT01-2101-xxx002            |
| 2a. | AUTOMATE   Drapery Battery Module<br>MT03-0305-xxx004         |
| 2b. | AUTOMATE   Versa Module 2.5M Cord (240V)<br>MT03-0305-xxx012  |
| 3.  | Versa Motor End "S" Track Pulley<br>MT03-0401-xxx004          |
| 4.  | AUTOMATE   Return Pulley "S" Track<br>MT03-0401-xxx013        |
| 5.  | Curtain Track<br>CU21-0101-xxx550                             |
| 6.  | Belt Fastening Button<br>CU21-0301-158001                     |
| 7.  | Rubber Belt<br>CU21-0301-158000                               |
| 8.  | Master Carrier<br>CU21-0401-010020                            |
| 9.  | Stopper<br>CU21-0401-010010                                   |
| 10. | Runners<br>CU21-0401-xxx001                                   |
| 11. | Ceiling Bracket<br>a. CU21-0501-xxx001<br>b. MT03-0401-xxx012 |
| 12. | End Hook<br>CU21-0201-xxx003                                  |



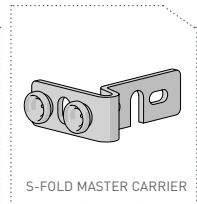
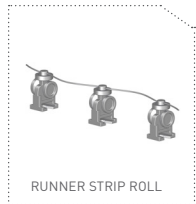
**OPTION**



**BRACKET OPTIONS**



**S-FOLD OPTION**



**COLOUR RANGE**



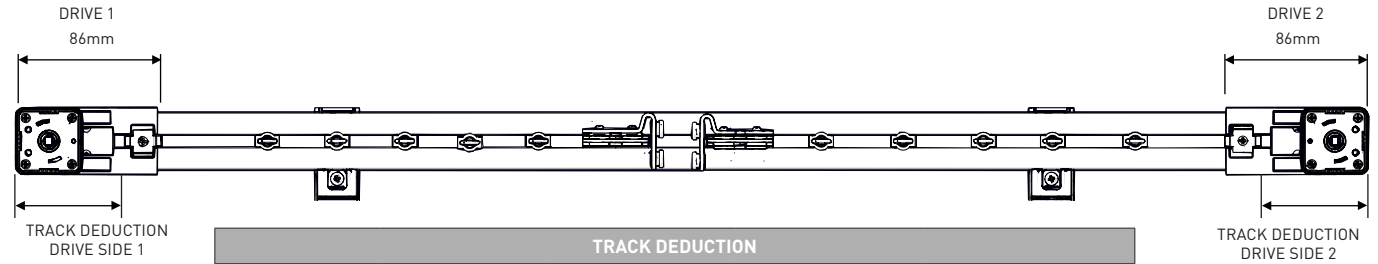
**CONTROL OPTIONS**



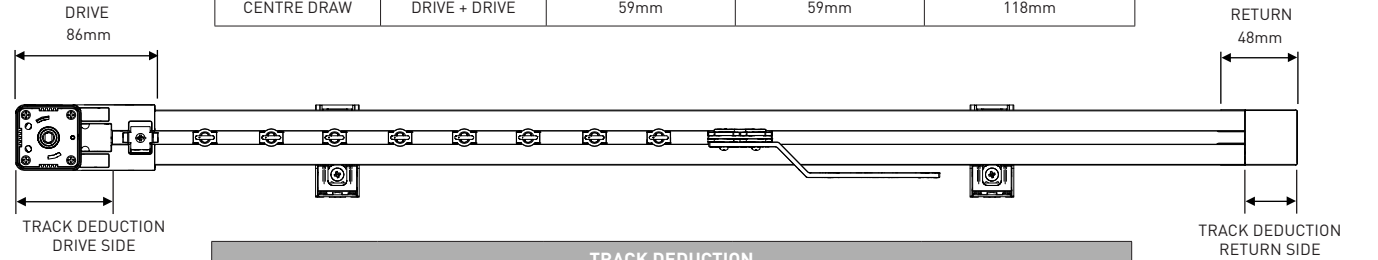
**SPECIFICATIONS**

| DRAPE MOTOR SPECIFICATIONS |                            |
|----------------------------|----------------------------|
| Region                     | AU/EU/UK                   |
| Power Cable Length         | 2500mm                     |
| Voltage Input              | 100 - 240V 50Hz            |
| Capacity                   | 1.2 Nm @ 120 RPM / 14 cm/s |
| Running Time               | 12 min                     |
| Max Current                | 1.3 A                      |
| Consumption                | 20 W                       |
| Protection class           | IP40                       |
| Frequency                  | 433.92 MHz                 |
| Sound Level                | 44 dB                      |
| Weight                     | 0.83 Kg (Motor Only)       |
| RF Modulation              | FSK                        |
| Limit Switch Type          | Electronic                 |
| Temp Working Range         | 0 °C to 60 °C              |
| Insulation Class           | II                         |

**DEDUCTION**

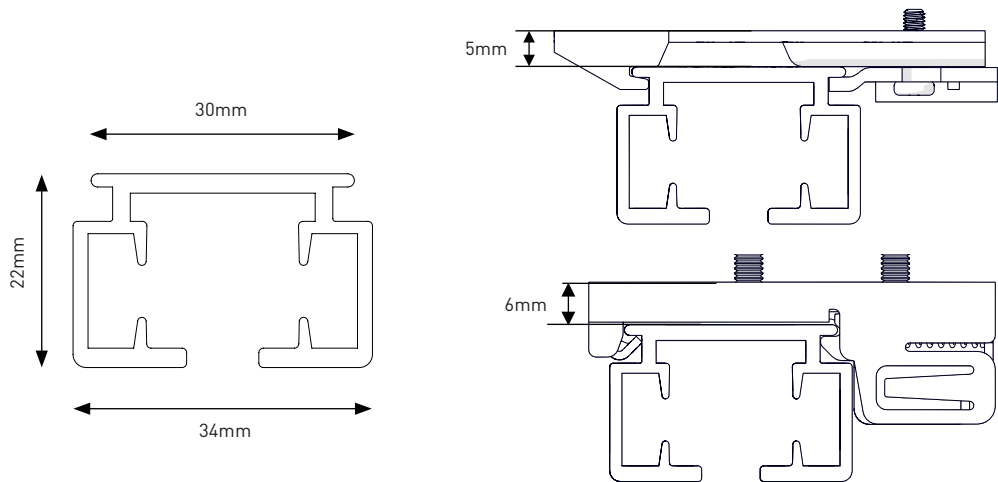


| TRACK DEDUCTION |               |              |              |                   |
|-----------------|---------------|--------------|--------------|-------------------|
| CURTAIN TYPE    | PULLEY TYPES  | DRIVE SIDE 1 | DRIVE SIDE 2 | OVERALL DEDUCTION |
| CENTRE DRAW     | DRIVE + DRIVE | 59mm         | 59mm         | 118mm             |



| TRACK DEDUCTION |                |            |             |                   |
|-----------------|----------------|------------|-------------|-------------------|
| CURTAIN TYPE    | PULLEY TYPES   | DRIVE SIDE | RETURN SIDE | OVERALL DEDUCTION |
| ONE WAY         | DRIVE + RETURN | 59mm       | 33mm        | 92mm              |

**TRACK PROFILE & DIMENSIONS**



**STRAIGHT TRACK**

